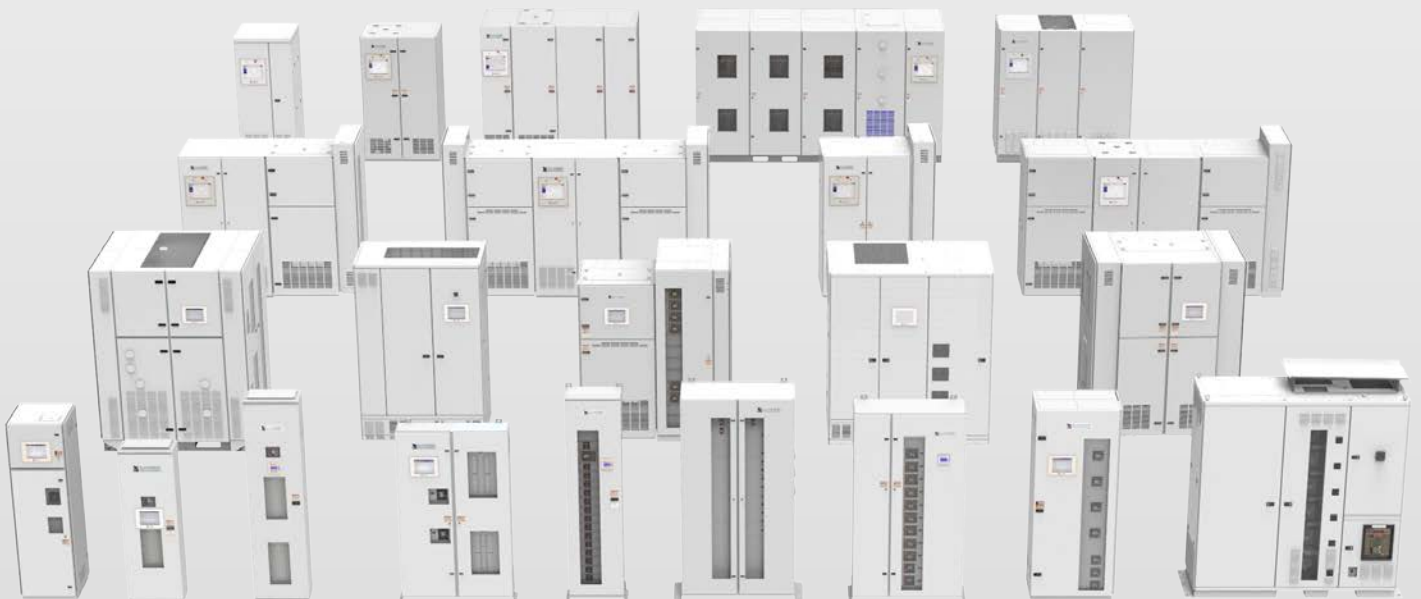




**LAYERZERO**  
POWER SYSTEMS, INC.

Static Transfer Switches  
Critical Power Distribution Systems



Product Catalog

## LayerZero Power Systems: Quality Products Built for Reliability

LayerZero Power Systems manufactures power distribution products for the mission-critical industry, including Static Transfer Switches, Power Distribution Units, and Power Panels. Founded in 2001, the company has established a reputation for designing solutions that are safe and reliable, with advanced power quality monitoring capabilities such as real-time waveform capture.

LayerZero Power Systems understands that reliability requirements in the mission-critical industry are more stringent than ever. LayerZero products are designed, manufactured, and tested in our vertically-integrated facility using state-of-the-art equipment, allowing for the highest levels of manufacturing consistency and product quality. Our quality assurance processes go above and beyond the industry standard, we test all circuit breakers, serialize all critical components, and maintain this information in an active and dynamic database.

In addition, we understand that a “one-size fits all” approach is not applicable to most facilities. Our in-house design team allows us to custom build LayerZero products from standard configurations to best fit your specific needs, so you can rest assured that your equipment is specifically tailored to conform to your exact project requirements.

We invite you to visit the manufacturing facilities at LayerZero Power Systems so that you can experience our product quality in person, please contact me if you would like to schedule a factory tour.

**Rob Neidlinger**  
National Sales Manager  
rob.n@layerzero.com



## Nobody Is Safer, More Reliable, or Better Connected than LayerZero

LayerZero Power Systems has long been an innovator in mission-critical power distribution safety, having developed a number of industry-firsts that has forever changed the power distribution industry for the better. Our Series 70 product line was built from the ground up, centered upon the idea of designing power distribution systems that are safe for facility operators to use. Product features include the IP-20 rated finger-safe SafePanel™ Panel Board, InSight™ IR Portholes, and systems with front-only access. In addition, we were the first in the industry to bring NELP (No Exposed Live Parts) Remote Distribution Panels to market.



When it comes to reliability, nobody designs and builds higher quality power distribution solutions than LayerZero Power Systems. The Series 70: eSTS is the most reliable and technologically-advanced static transfer switch ever developed, having no single-point-of-failure, and delivering magnitudes of higher reliability than comparable STS products. Downstream of the STS, our distribution systems are all selective trip coordinated - increasing reliability. LayerZero Power Systems products are trusted among the world’s leading organizations - including many Fortune 50 companies.

LayerZero products are highly-connected using vendor-neutral protocols, so you can integrate and monitor our products with your existing DCIM and building management system platforms. There are no proprietary limitations blocking communications between protocols from different companies - LayerZero products will connect using Modbus, HTTP, SNMP, Bluetooth, and Dry Contacts. In addition, our open connectivity packages communicate information for metering, alarms, waveforms, setpoints, event logs, panel setup, and diagnostics.

All LayerZero products have advanced monitoring capabilities, including real-time waveform capture, metering capabilities, and the ability to plot ITIC curves. LayerZero Power Systems designs and manufactures the most technologically advanced power quality products on the planet.

### Safety • Reliability • Connectivity • Monitoring

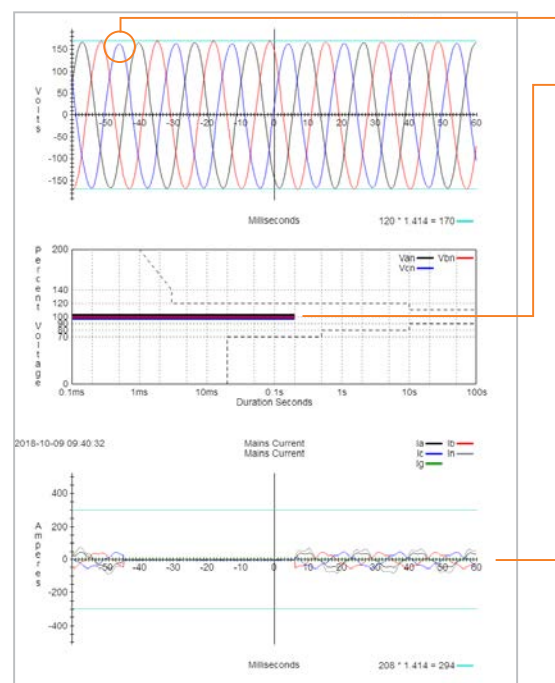


## LayerZero Provides a Picture Of Your Power Distribution System

LayerZero Power Systems products provide pictures of your power distribution as waveform captures and as ITIC curves.

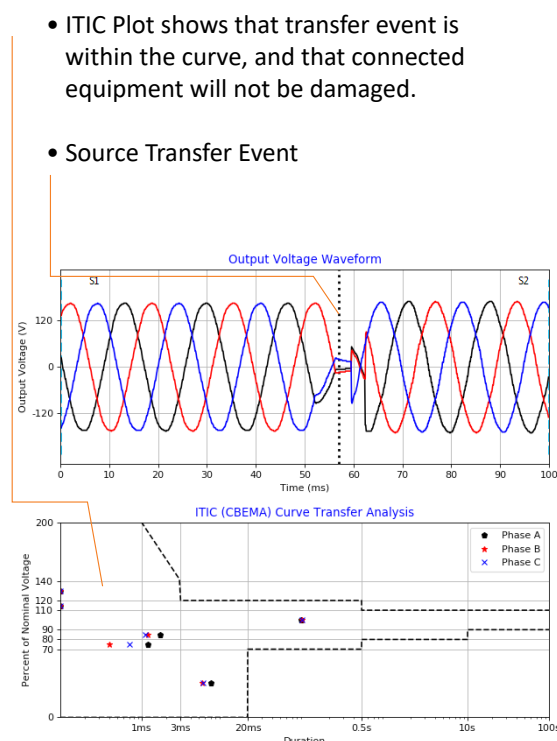
Waveform captures are automatically triggered every time an event, such as a source transfer or power quality event, occurs. Waveform captures show power quality plotted over a period of time; the Y-axis of the curve shows voltage, and the X-axis shows time.

ITIC plots are guidelines created by the Information Technology Industry Council that display how long equipment can last with conditions of under and over voltage.



**ITIC Curve in a Remote Distribution Panel**

- Undervoltage Event on “B” phase
- ITIC Plot shows that undervoltage event is within the curve, and that connected equipment will not be damaged.
- Current waveform shows the output current of the undervoltage event



- ITIC Plot shows that transfer event is within the curve, and that connected equipment will not be damaged.
- Source Transfer Event

**The ITIC Plot Curve Shows If Equipment May Have Been Damaged By Power Events**

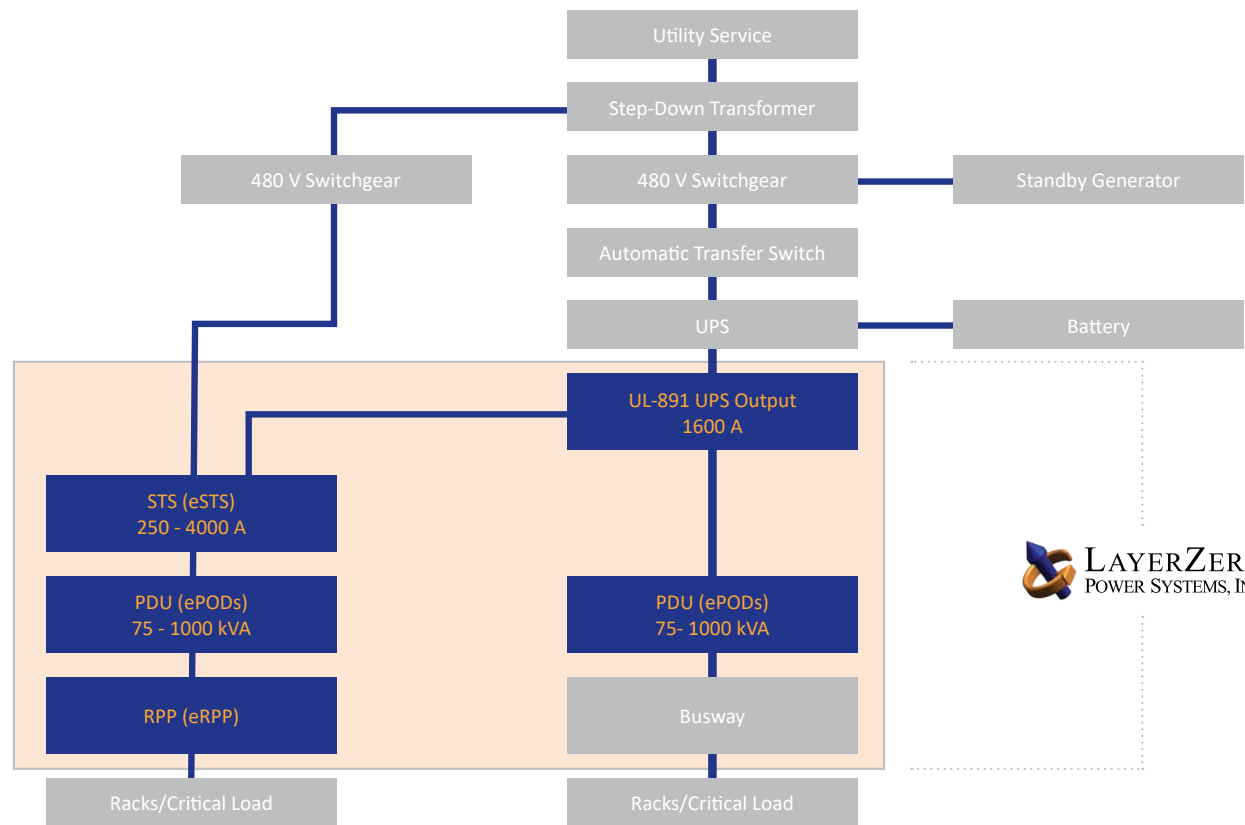
An ITIC curve in a static transfer switch shows a picture that proves whether the transfer was fast enough to damage critical systems. The requirements of critical equipment state that servers cannot withstand voltage at zero for less than 20 milliseconds.

## Modbus Points in LayerZero Products

eSTS, ePODs (STS + PDU)			
Frequency	Volts (L-L) Phases A, B, C	Volts (L-N) Phases A, B, C	Percent VTHD
Phase Rotation	Current Phase A, B, C, N, G	Real Power	Apparent Power
Reactive Power	Power Factor	Energy most significant word	Energy least significant word
Block Demand	Block Demand Peak	Rolling Demand	Rolling Demand Peak
High Current Warning Phase A, B, C	Over Current Alarm Phase A, B, C, N, G	High Current Warning Phase A, B, C, N, G	Under Voltage Phase A, B, C
Low Voltage Phase A, B, C	High Voltage Phase A, B, C	Over Voltage Phase A, B, C	Under Frequency
Over Frequency	High VTHD	Over VTHD	Phase Rotation
Summary Alarm	High Temperature	Over Temperature	Error
Suppressor Trip	Form C Error		

eRPP, eRDP, ePODs Type-X			
S1, S2, Output	Vab	Vbc	Vca
	Van	Vbn	Vcn
	Ia	Ib	Ic
	In	Ig	Frequency
	VanVab THD	VbnVbc THD	VcnVca THD
	Average Voltage THD	Ia THD	Ib THD
	Ic THD	In THD	Ig THD
S1, S2	Average Phases I THD	K Factor	
	Fail	Preferred	1st Alternate
	Under Voltage	Over Voltage	Under Frequency
	Over Frequency	Not Available	Over Current
	Phase Exceeds Manual Limit	Phase Exceeds Auto Limit	TVSS Failure
	Shorted SCR	Open SCR	
Ia Peak	Ib Peak	Ic Peak	In Peak
Ig Peak	Real Power	Reactive Power	Apparent Power
Power Factor	Crest Factor	Crest Factor Average Phases	Current Imbalance
Phase Angle S1 to S2	Phase Angle S1 to Output	Phase Angle S2 to Output	Phase Rotation
Summary Alarm	On S1	On S2	Transfer Count
Output Failure	CB 101 Open	CB 102 Open	CB 201 Open
CB 202 Open	CB 301 Open	CB 302 Open	Startup
Shutdown	Door 1	Door 2	Door 3
Door 4	Cabinet 1 Over Temperature	Cabinet 2 Over Temperature	Fan Fail 1
Fan Fail 2	Fan Fail 3	Fan Fail 4	LZNET Fail SCB 1

# LayerZero: Mission Critical Distribution

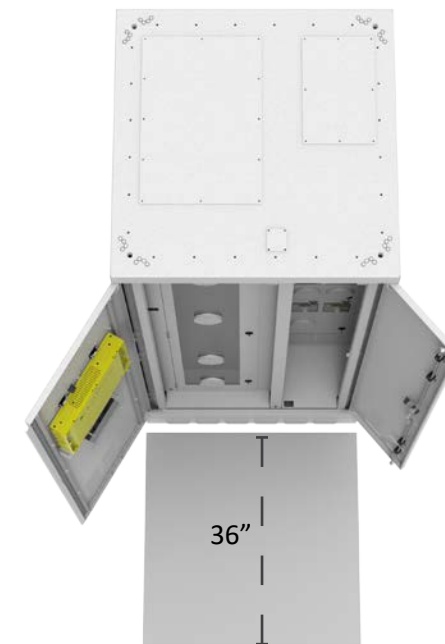
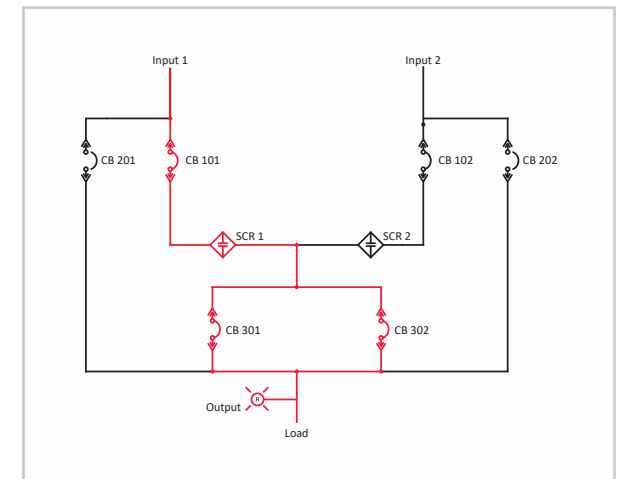


# Static Transfer Switches (eSTS)- 150-250 A

Voltage	120/208 V; 480 V; 480/277 V; 415/240 V; 400/230 V; 220/380 V; 600 V; 600/347 V; 575 V
Number of Sources*	2
Number of Poles	3-Pole
Frequency	50 Hz, 60 Hz
Redundancy	Single Modular Redundancy, Triple Modular Redundancy
Dimensions	36"W x 36"D x 80"H (1219 mm x 914 mm x 2032 mm)
Weight	1,350 lbs (612 kg)
Heat Dissipation	4,750 BTU/Hr
Cooling	Convection (No Fans in System)
Cable Entry	Top/Bottom
Cable Entry Type	NEMA 2-Hole (1/2" dia), 1-3/4" Spacing Compression Type Lug
Cable Size	Up To 250KCMIL - 350KCMIL
Connectivity	Ethernet
Clearances:	
Front	36" [914mm]
Rear	0"
Left	0"
Right	0"
Top	18" [457mm]



\* 3-Source Configuration Available



zenSSQM	Black Box Forensic Diagnostics
TMR Optional	Epoxy Coated Buswork
Safe Bypass Procedure	Silver Plated Terminals
Voice Guided Bypass	Maintenance-Free Joints
InSight™ IR Portholes	Ethernet Connectivity
Touch Screen GUI	Modbus/TCP
Waveform Capture	Network Time Protocol
Fiber Optic-Based Controls	SNMP
Convection Cooling	NELP

## Static Transfer Switches (eSTS)



## STS + Power Distribution Units (ePODs)



## Power Distribution Units



## Power Panels (eRPP, eRDP, SafeArm)

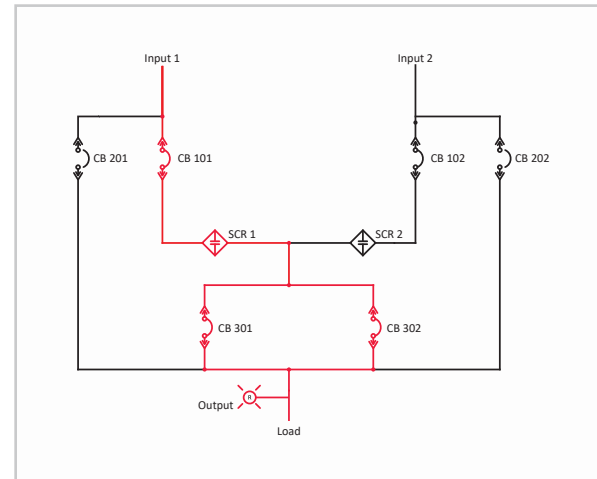




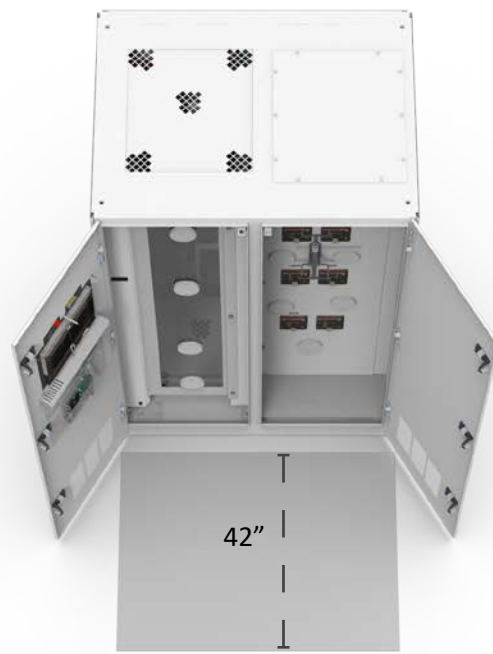
# Static Transfer Switches (eSTS)- 400-600 A

Voltage	120/208 V; 480 V; 480/277 V; 415/240 V; 400/230 V; 220/380 V; 600 V; 600/347 V; 575 V
Number of Sources*	2
Number of Poles	3-Pole
Frequency	50 Hz, 60 Hz
Redundancy	Single Modular Redundancy, Triple Modular Redundancy
Dimensions	48"W x 36"D x 80"H (1219 mm x 914 mm x 2032 mm)
Weight	1,400-1500 lbs (635-685 kg)
Heat Dissipation	7,000-9,500 BTU/Hr
Cooling	Convection (No Fans in System)
Cable Entry	Top/Bottom
Cable Entry Type	NEMA 2-Hole (1/2" dia), 1-3/4" Spacing Compression Type Lug
Cable Size	(2) 250KCMIL - (2) 350KCMIL
Connectivity	Ethernet
Clearances:	
Front	36" [914mm]
Rear	0"
Left	0"
Right	0"
Top	18" [457mm]

\* 3-Source Configuration Available



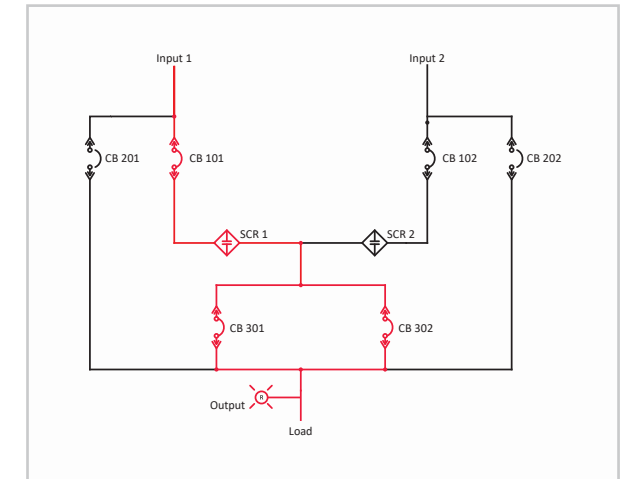
zenSSQM	Black Box Forensic Diagnostics
TMR Optional	Epoxy Coated Buswork
Safe Bypass Procedure	Silver Plated Terminals
Voice Guided Bypass	Maintenance-Free Joints
InSight™ IR Portholes	Ethernet Connectivity
Touch Screen GUI	Modbus/TCP
Waveform Capture	Network Time Protocol
Fiber Optic-Based Controls	SNMP
Convection Cooling	NELP



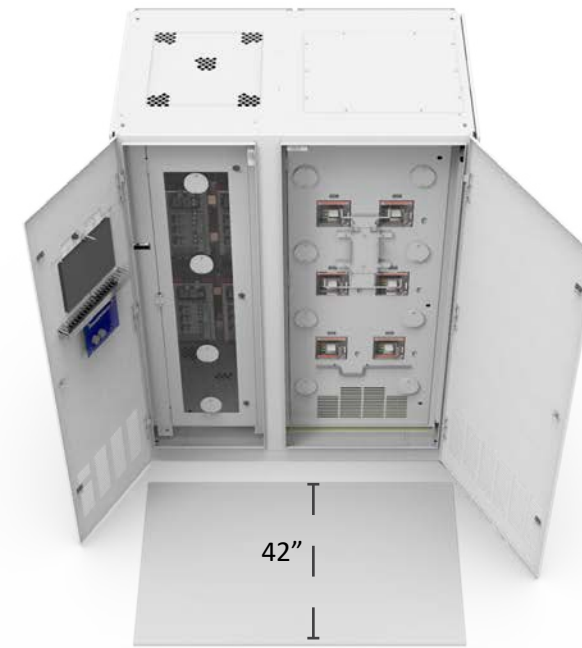
# Static Transfer Switches (eSTS)- 800 A

Voltage	120/208 V; 480 V; 480/277 V; 415/240 V; 400/230 V; 220/380 V; 600 V; 600/347 V; 575 V
Number of Sources*	2
Number of Poles	3-Pole
Frequency	50 Hz, 60 Hz
Redundancy	Single Modular Redundancy, Triple Modular Redundancy
Dimensions	58"W x 36"D x 80"H (1473 mm x 914 mm x 2032 mm)
Weight	1,950 lbs(885 kg)
Heat Dissipation	12,500 BTU/Hr
Cooling	Convection (No Fans in System)
Cable Entry	Top/Bottom
Cable Entry Type	NEMA 2-Hole (1/2" dia), 1-3/4" Spacing Compression Type Lug
Cable Size	(3) 250 KCMIL or (2) 500 KCMIL
Connectivity	Ethernet
Clearances:	
Front	42" [1067mm]
Rear	0"
Left	0"
Right	0"
Top	18" [457mm]

\* 3-Source Configuration Available



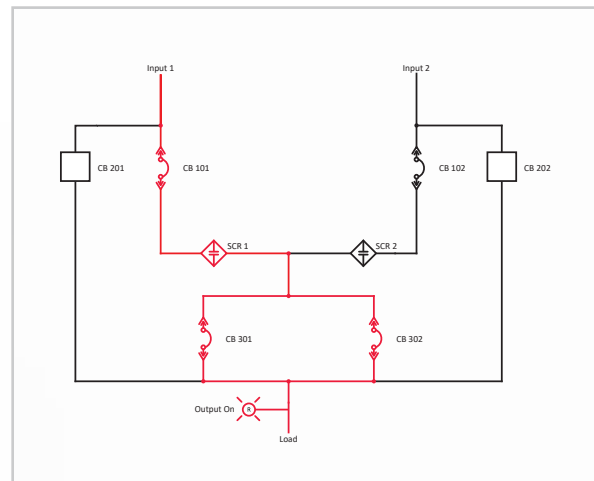
zenSSQM	Black Box Forensic Diagnostics
TMR Optional	Epoxy Coated Buswork
Safe Bypass Procedure	Silver Plated Terminals
Voice Guided Bypass	Maintenance-Free Joints
InSight™ IR Portholes	Ethernet Connectivity
Touch Screen GUI	Modbus/TCP
Waveform Capture	Network Time Protocol
Fiber Optic-Based Controls	SNMP
Convection Cooling	NELP



# Static Transfer Switches (eSTS)- 1200 A

Voltage	120/208 V; 480 V; 480/277 V; 415/240 V; 400/230 V; 220/380 V; 600 V; 600/347 V; 575 V
Number of Sources*	2
Number of Poles	3-Pole
Frequency	50 Hz, 60 Hz
Redundancy	Single Modular Redundancy, Triple Modular Redundancy
Dimensions	96"W x 48"D x 90"H (2438 mm x 1219 mm x 2286 mm)
Weight	5,500 lbs (2495 kg)
Heat Dissipation	24,000 BTU/Hr
Cooling	Convection (No Fans in System)
Cable Entry	Top/Bottom
Cable Entry Type	NEMA 2-Hole (1/2" dia), 1-3/4" Spacing Compression Type Lug
Cable Size	(4) 350 MCM
Connectivity	Ethernet
Clearances:	
Front	42" [1067mm]
Rear	4" [102mm]
Left	0"
Right	0"
Top	18" [457mm]

\* 3-Source Configuration Available

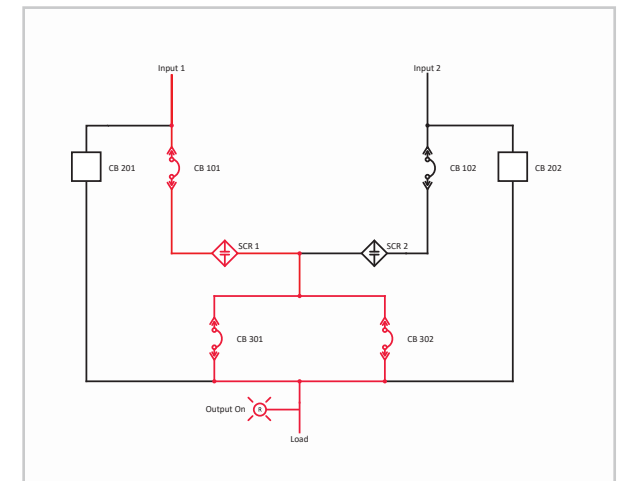


zenSSQM	Black Box Forensic Diagnostics
TMR Optional	Epoxy Coated Buswork
Safe Bypass Procedure	Silver Plated Terminals
Voice Guided Bypass	Maintenance-Free Joints
InSight™ IR Portholes	Ethernet Connectivity
Touch Screen GUI	Modbus/TCP
Waveform Capture	Network Time Protocol
Fiber Optic-Based Controls	SNMP
Convection Cooling	NELP



# Static Transfer Switches (eSTS)- 1000-1200 A

Voltage	120/208 V; 480 V; 480/277 V; 415/240 V; 400/230 V; 220/380 V; 600 V; 600/347 V; 575 V
Number of Sources	2
Number of Poles	3-Pole
Frequency	50 Hz, 60 Hz
Redundancy	Single Modular Redundancy, Triple Modular Redundancy
Dimensions	59"W x 45"D x 88"H (1,505 mm x 1194 mm x 2236 mm)
Weight	3,000 lbs (1361 kg)
Heat Dissipation	13,452-16,352 BTU/Hr
Cooling	Forced air cooling
Cable Entry	Top/Bottom
Cable Entry Type	NEMA 2-Hole (1/2" dia), 1-3/4" Spacing Compression Type Lug
Cable Size	(4) 350 MCM
Connectivity	Ethernet
Clearances:	
Front	42" [1067mm]
Rear	0"
Left	0"
Right	0"
Top	18" [457mm]

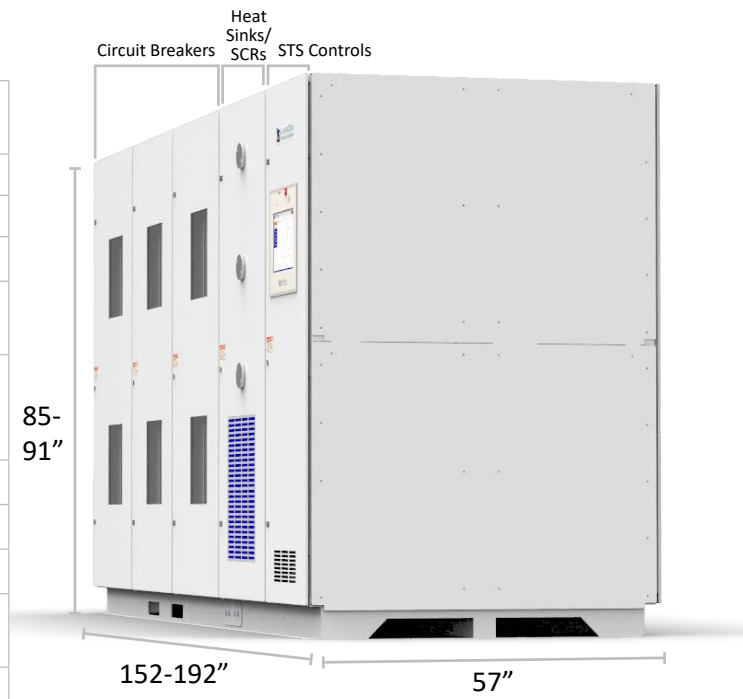


zenSSQM	Black Box Forensic Diagnostics
TMR Optional	Epoxy Coated Buswork
Safe Bypass Procedure	Silver Plated Terminals
Voice Guided Bypass	Maintenance-Free Joints
InSight™ IR Portholes	Ethernet Connectivity
Touch Screen GUI	Modbus/TCP
Waveform Capture	Network Time Protocol
Fiber Optic-Based Controls	SNMP
Cooling Redundancy	NELP

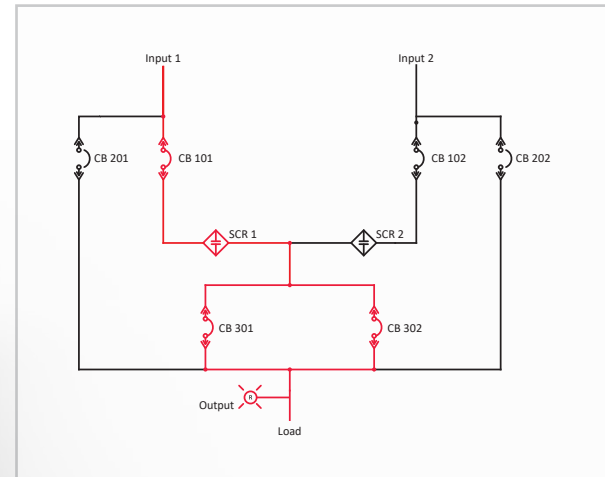


# Static Transfer Switches (eSTS)- 1600-4000 A

Voltage	120/208 V; 480 V; 480/277 V; 415/240 V; 400/230 V; 220/380 V; 600 V; 600/347 V; 575 V
Number of Sources	2
Number of Poles	3-Pole
Frequency	50 Hz, 60 Hz
Redundancy	Single Modular Redundancy, Triple Modular Redundancy
Dimensions	152"W x 57"D x 85"H (3861 mm x 1448 mm x 2159 mm) - 192"W x 57"D x 91"H (4877 mm x 1448 mm x 2311 mm)
Weight	7,600-11,000 lbs (3,447-4,989 kg)
Heat Dissipation	24,200-62,700 BTU/Hr
Cable Entry	Top/Bottom
Cable Entry Type	NEMA 2-Hole (1/2" dia), 1-3/4" Spacing Compression Type Lug
Cable Size	(12MAX) 600 KCMIL - (12) 750 KCMIL
Connectivity	Ethernet



Clearances:	
Front	42" [1067mm]
Rear	42" [1067mm]
Left	0"-4" [102mm]
Right	0"-4" [102mm]
Top	18" [457mm]



zenSSQM	Black Box Forensic Diagnostics
TMR Optional	Epoxy Coated Buswork
Safe Bypass Procedure	Silver Plated Terminals
Voice Guided Bypass	Maintenance-Free Joints
InSight™ IR Portholes	Ethernet Connectivity
Touch Screen GUI	Modbus/TCP
Waveform Capture	Network Time Protocol
Fiber Optic-Based Controls	SNMP
Convection Cooling	NELP

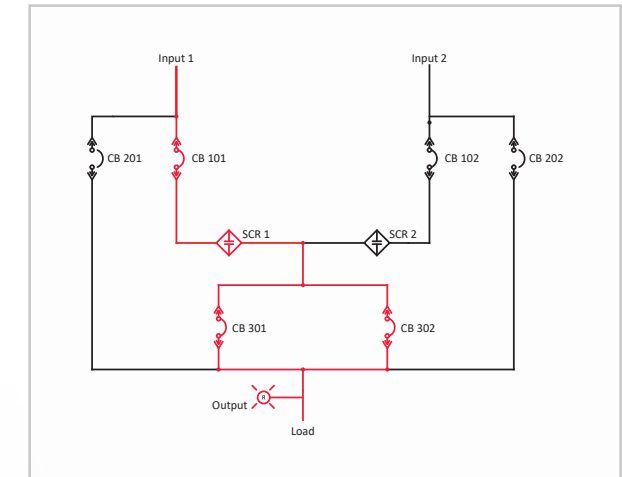


# Static Transfer Switches (eSTS)- 4-Pole, 250-1200 A

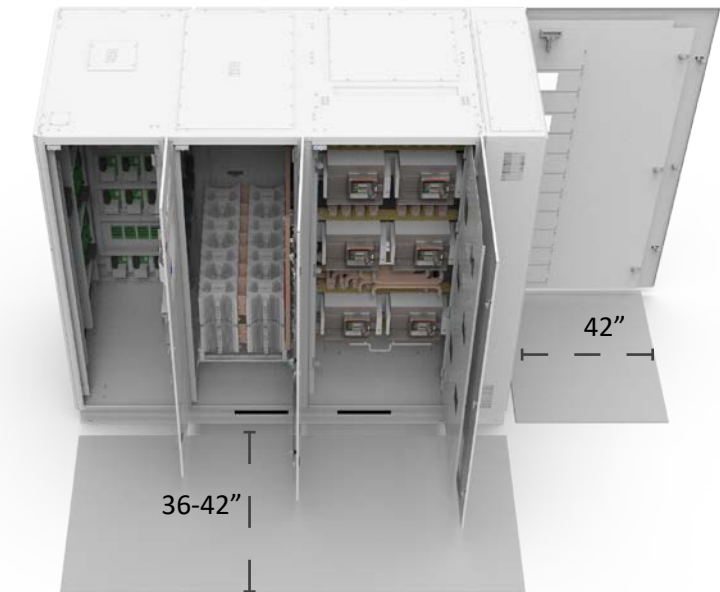
Voltage	120/208 V; 220/380 V; 230/400 V; 240/415 V; 277/480 V
Number of Sources	2
Number of Poles	4-Pole
Frequency	50 Hz, 60 Hz
Redundancy	Single Modular Redundancy, Triple Modular Redundancy
Dimensions	48" W x 36" D x 90" H (1219.2 mm x 914.4 mm x 2286 mm) - 152" W x 57" D x 80" H (3861 mm x 1448 mm x 2032 mm)
Weight	1,800 lbs. (816 kg) - 7,600 lbs (3447 kg)
Heat Dissipation	4,400 - 17,500 BTU/Hr
Cooling	Convection (No Fans in System)
Cable Entry	Top/Bottom
Cable Entry Type	NEMA 2-Hole (1/2" dia), 1-3/4" Spacing Compression Type Lug
Cable Size	350KCMIL minimum (250A)
Connectivity	Ethernet



Clearances:	
Front	36-42" [914-1067mm]
Rear	0-4" [102mm]
Left	0"
Right	0-42" [1067mm]
Top	18" [457mm]



zenSSQM	Black Box Forensic Diagnostics
TMR Optional	Epoxy Coated Buswork
Safe Bypass Procedure	Silver Plated Terminals
Voice Guided Bypass	Maintenance-Free Joints
InSight™ IR Portholes	Ethernet Connectivity
Touch Screen GUI	Modbus/TCP
Waveform Capture	Network Time Protocol
Fiber Optic-Based Controls	SNMP
Convection Cooling	NELP



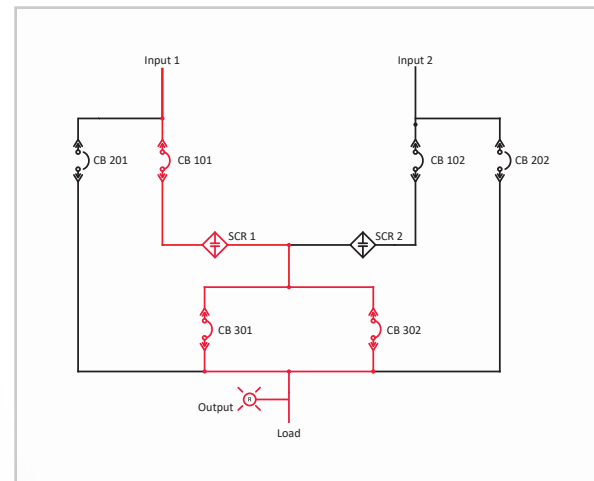


# Static Transfer Switches (eSTS)- 4-Pole, 1600-2000 A

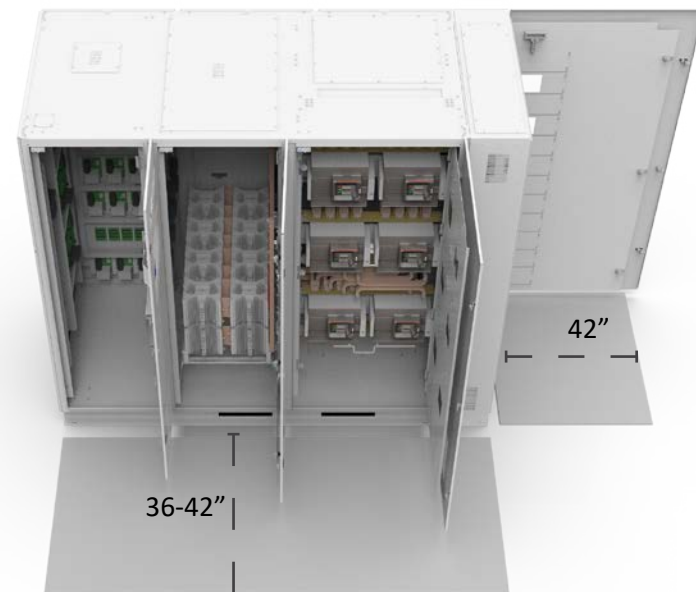
Voltage	120/208 V; 220/380 V; 230/400 V; 240/415 V; 277/480 V
Number of Sources	2
Number of Poles	4-Pole
Frequency	50 Hz, 60 Hz
Redundancy	Single Modular Redundancy, Triple Modular Redundancy
Dimensions	48" W x 36" D x 90" H (1219.2 mm x 914.4 mm x 2286 mm) - 152" W x 57" D x 80" H (3861 mm x 1448 mm x 2032 mm)
Weight	1,800 lbs. (816 kg) - 7,600 lbs (3447 kg)
Heat Dissipation	24,500 - 33,200BTU/Hr
Cable Entry	Top/Bottom
Cable Entry Type	NEMA 2-Hole (1/2" dia), 1-3/4" Spacing Compression Type Lug
Cable Size	350KCMIL minimum (250A)
Connectivity	Ethernet



Clearances:	
Front	36-42" [914-1067mm]
Rear	0-4" [102mm]
Left	0"
Right	0-42" [1067mm]
Top	18" [457mm]



zen SSQM	Black Box Forensic Diagnostics
TMR Optional	Epoxy Coated Buswork
Safe Bypass Procedure	Silver Plated Terminals
Voice Guided Bypass	Maintenance-Free Joints
InSight™ IR Portholes	Ethernet Connectivity
Touch Screen GUI	Modbus/TCP
Waveform Capture	Network Time Protocol
Fiber Optic-Based Controls	SNMP
Convection Cooling	NELP

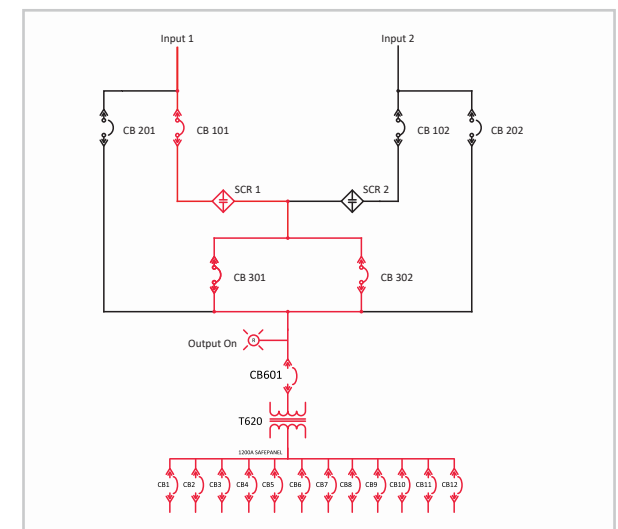


# STS+PDU (ePODs)- Type-P; Primary-Side STS

Voltage	208 V @ 240 V; 480 V; 575 V; 600 V
Number of Sources	2
Number of Poles	3-Pole
Frequency	50 Hz, 60 Hz
Redundancy	Single Modular Redundancy, Triple Modular Redundancy
Dimensions (side-facing distribution)	96"W x 88"H x 36"D (2438 mm x 2235 mm x 914 mm) - 125"W x 88" H x 36" D (3175 mm x 2235 mm x 914 mm)
Weight	2000 - 3000 lbs (907 kg - 1361 kg)
Heat Dissipation	Varies on Transformer Efficiency, Please Contact LayerZero Engineering.
Cable Entry	Top/Bottom
Cable Entry Type	NEMA 2-Hole (1/2" dia), 1-3/4" Spacing Compression Type Lug
Cable Size	Varies on size; 75 kVA, 125 kVA, 150 kVA, 225 kVA, 250 kVA, 300 kVA, 400 kVA, 500 kVA, 600 kVA, 750 kVA, 800 kVA, 1000 kVA
Connectivity	Ethernet



Clearances:	
Front	42" [1067mm]
Rear	4" [102mm]
Left	0"
Right	42" [1067mm]
Top	18" [457mm]

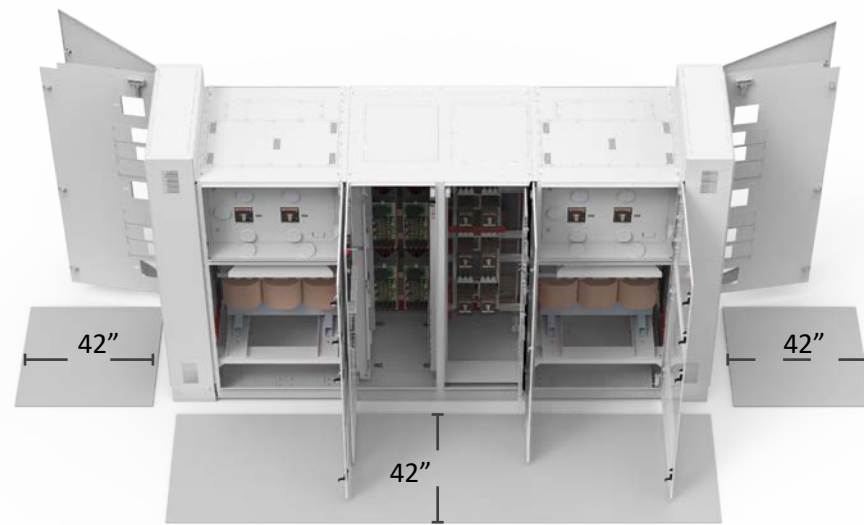
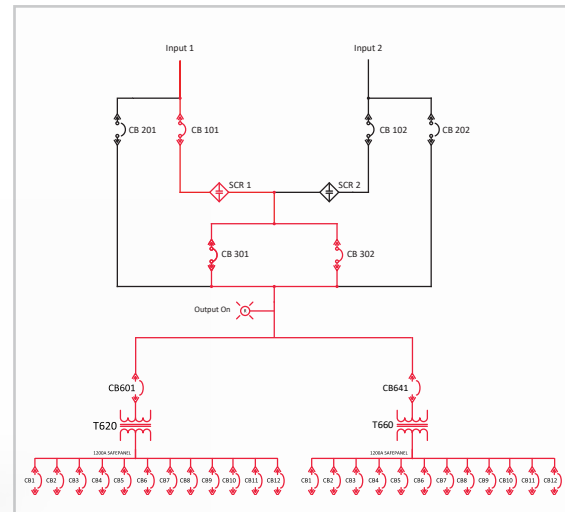


zen SSQM	Convection Cooling
TMR Optional	Black Box Forensic Diagnostics
Safe Bypass Procedure	Silver Plated Terminals
Voice Guided Bypass	Maintenance-Free Joints
InSight™ IR Portholes	Ethernet Connectivity
Touch Screen GUI	Modbus/TCP
Waveform Capture	Network Time Protocol
Fiber Optic-Based Controls	SNMP
NELP	



# STS+PDU (ePODs)- Dual Type-P; Primary-Side STS

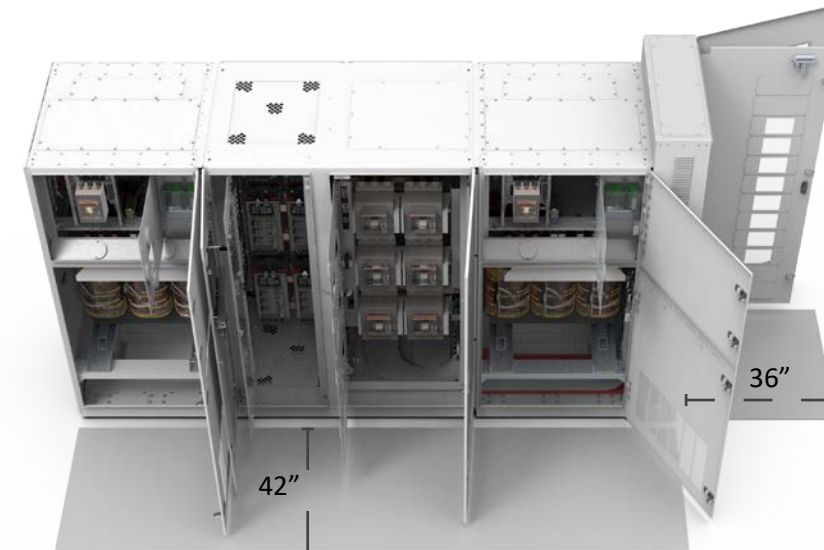
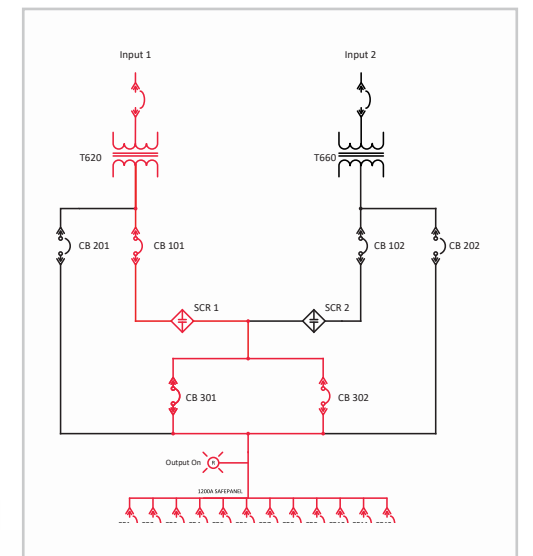
Voltage	120/208 V; 480 V; 480/277 V; 415/240 V; 400/230 V; 220/380 V; 600 V; 600/347 V; 575 V
Number of Sources	2
Number of Poles	3-Pole
Frequency	50 Hz, 60 Hz
Redundancy	Single Modular Redundancy, Triple Modular Redundancy
Dimensions	96"W x 48"D x 90"H (2438 mm x 1219 mm x 2286 mm)
Weight	5,500 lbs (2495 kg)
Heat Dissipation	24,000 BTU/Hr
Cable Entry	Top/Bottom
Cable Entry Type	NEMA 2-Hole (1/2" dia), 1-3/4" Spacing Compression Type Lug
Cable Size	(2) 350MCM
Connectivity	Ethernet
Clearances:	
Front	42" [1067mm]
Rear	4" [102mm]
Left	42" [1067mm]
Right	42" [1067mm]
Top	18" [457mm]



zenSSQM	Convection Cooling
TMR Optional	Black Box Forensic Diagnostics
Safe Bypass Procedure	Silver Plated Terminals
Voice Guided Bypass	Maintenance-Free Joints
InSight™ IR Portholes	Ethernet Connectivity
Touch Screen GUI	Modbus/TCP
Waveform Capture	Network Time Protocol
Fiber Optic-Based Controls	SNMP
NELP	

# STS+PDU (ePODs)- Type-S; Secondary-Side STS

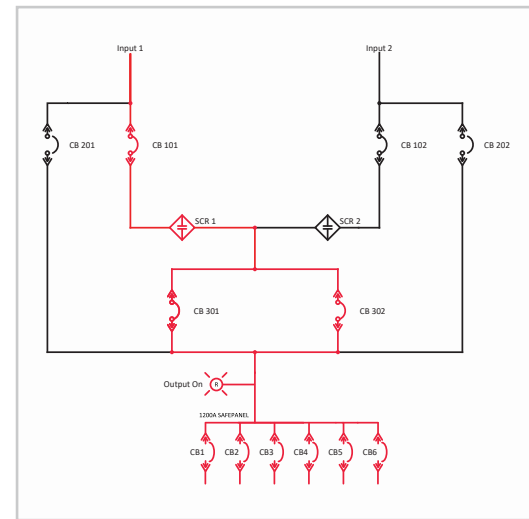
Voltage	480 V; 575 V, 600 V
Number of Sources	2
Number of Poles	3-Pole
Redundancy	SMR, TMR
Dimensions	142"W x 86"H x 36"D (3607mm x 2032 mm x 914 mm) - 190"W x 86"H x 36"D (4826 mm x 2032 mm x 914 mm)
Weight	2,150 - 3,500 lbs (975 kg - 1588 kg)
Heat Dissipation	Varies on Transformer Efficiency
Cable Entry	Top/Bottom
Cable Entry Type	NEMA 2-Hole (1/2" dia), 1-3/4" Spacing Compression Type Lug
Cable Size	(2) 350MCM
Connectivity	Ethernet
Clearances:	
Front	42" [1067mm]
Rear	4" [102mm]
Left	0"
Right	36" [914mm]
Top	18" [457mm]



zenSSQM	Convection Cooling
TMR Optional	Black Box Forensic Diagnostics
Safe Bypass Procedure	Silver Plated Terminals
Voice Guided Bypass	Maintenance-Free Joints
InSight™ IR Portholes	Ethernet Connectivity
Touch Screen GUI	Modbus/TCP
Waveform Capture	Network Time Protocol
Fiber Optic-Based Controls	SNMP
NELP	

# STS+PDU (ePODs)- Type-N; No Transformer

Voltage	208 V @ 240 V; 480 V; 575 V; 600 V
Number of Sources	2
Number of Poles	3-Pole
Frequency	50 Hz, 60 Hz
Redundancy	Single Modular Redundancy, Triple Modular Redundancy
Dimensions (side-facing distribution)	60"W x 36"D x 86"H (1524 mm x 914 mm x 2032 mm) - 108"W x 48"D x 90"H (2743 mm x 1219 mm x 2286 mm)
Weight	1,900 lbs (862 kg) - 6,050 lbs (2744 kg)
Heat Dissipation	4,750-24,000 BTU/Hr
Cable Entry	Top/Bottom
Cable Entry Type	NEMA 2-Hole (1/2" dia), 1-3/4" Spacing Compression Type Lug
Cable Size	(2) 250MCM
Connectivity	Ethernet



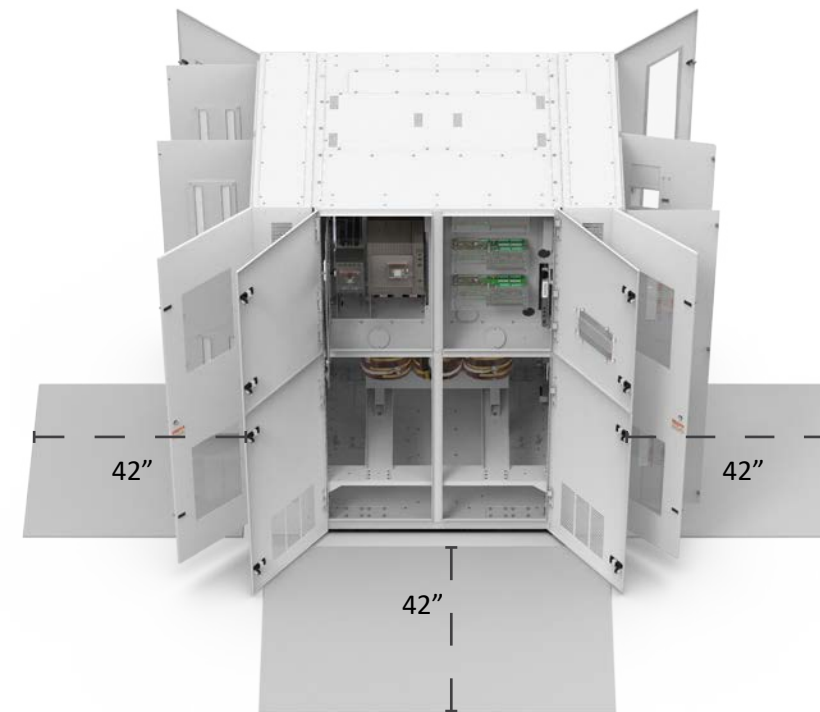
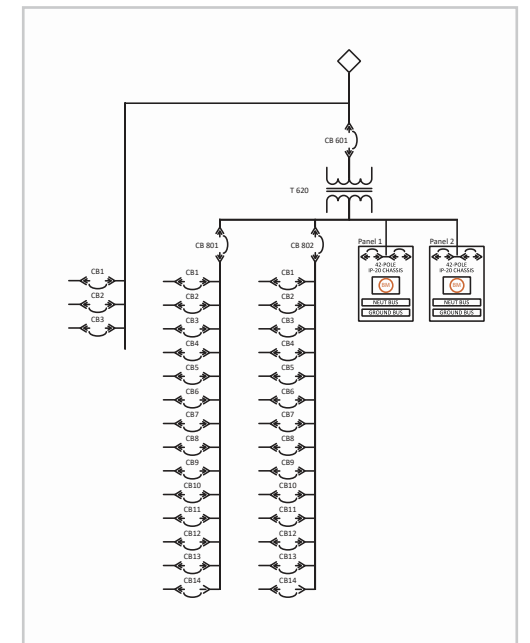
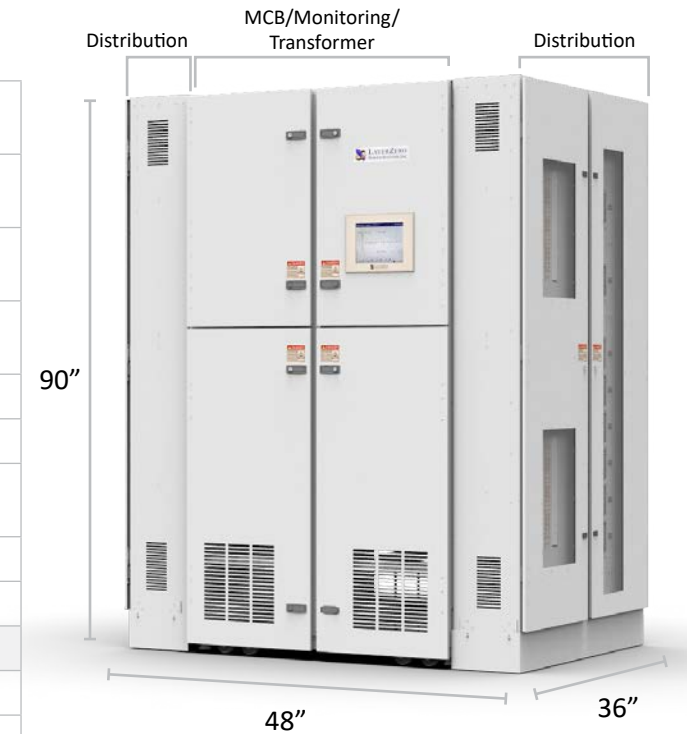
zen SSQM	Convection Cooling
TMR Optional	Black Box Forensic Diagnostics
Safe Bypass Procedure	Silver Plated Terminals
Voice Guided Bypass	Maintenance-Free Joints
InSight™ IR Portholes	Ethernet Connectivity
Touch Screen GUI	Modbus/TCP
Waveform Capture	Network Time Protocol
Fiber Optic-Based Controls	SNMP
NELP	



# Power Distribution Unit (ePODs)- Type-X

Input Voltage	480 V; 575 V; 600 V
Output Voltage	120/208 V; 240/415 V
Transformer Size	75 kVA, 150 kVA, 216 kVA, 225 kVA, 288 kVA, 300 kVA; 400 kVA
Dimensions	48" W x 90" H x 36" D (1219 mm H x 2235 mm H x 914 mm D)
Weight	2,450 lbs (1111 kg) - 3,900 lbs (1769 kg)
Heat Dissipation	Varies on Transformer Efficiency
Cable Entry Type	NEMA 2-Hole (1/2" dia), 1-3/4" Spacing Compression Type Lug
Cable Size	(2) 4/0
Connectivity	Ethernet

Clearances:	
Front	42" [1067mm]
Rear	4" [102mm]
Left	42" [1067mm]
Right	42" [1067mm]
Top	18" [457mm]



zen DPQM	Convection Cooling
SafePanel™ Distribution	Black Box Forensic Diagnostics
Bluetooth Connectivity	Silver Plated Terminals
InSight™ IR Portholes	Ethernet Connectivity
Touch Screen GUI	Modbus/TCP
Waveform Capture	Network Time Protocol
SNMP	NELP

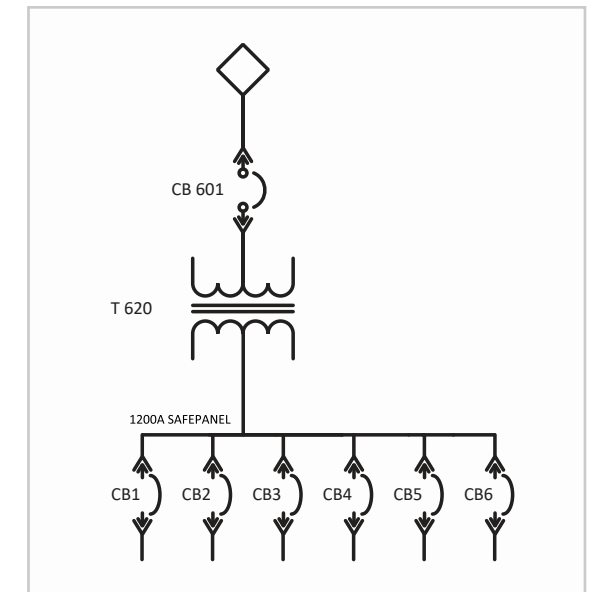
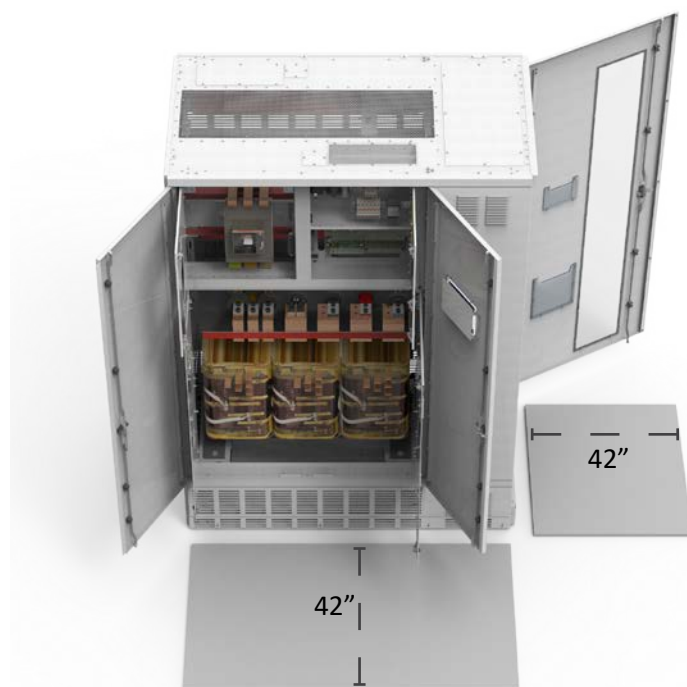
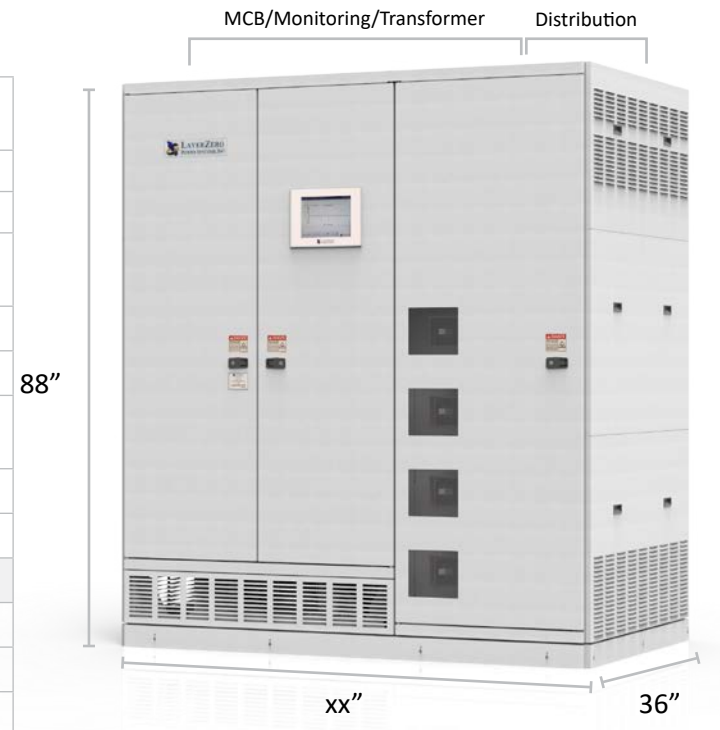
# Power Distribution Unit (ePODs)- Type-X SF

Input Voltage	480 V; 575 V; 600 V
Output Voltage	120/208 V; 240/415 V
Transformer Size	75 kVA, 150 kVA, 216 kVA, 225 kVA, 288 kVA, 300 kVA; 400 kVA
Dimensions	48" W x 90" H x 36" D (1219 mm H x 2235 mm H x 914 mm D)
Weight	2,450 lbs (1111 kg) - 3,900 lbs (1769 kg)
Heat Dissipation	Varies on Transformer Efficiency
Cable Entry Type	NEMA 2-Hole (1/2" dia), 1-3/4" Spacing Compression Type Lug
Cable Size	(2) 250MCM
Connectivity	Ethernet
Clearances:	
Front	42" [1067mm]
Rear	4" [102mm]
Left	0
Right	42" [1067mm]
Top	18" [457mm]

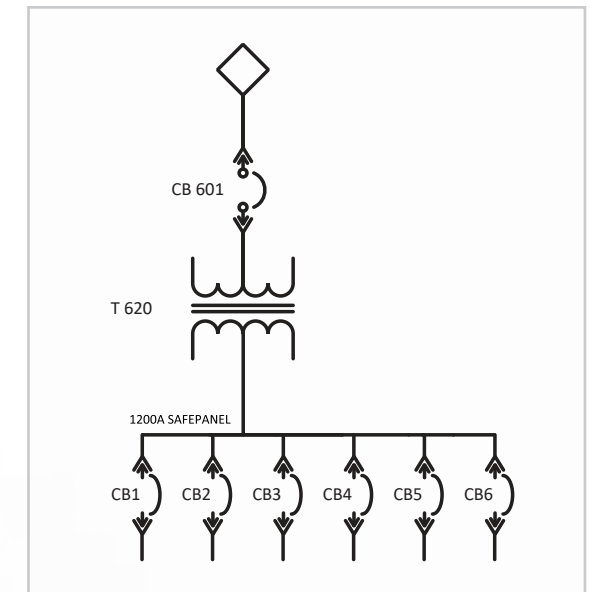
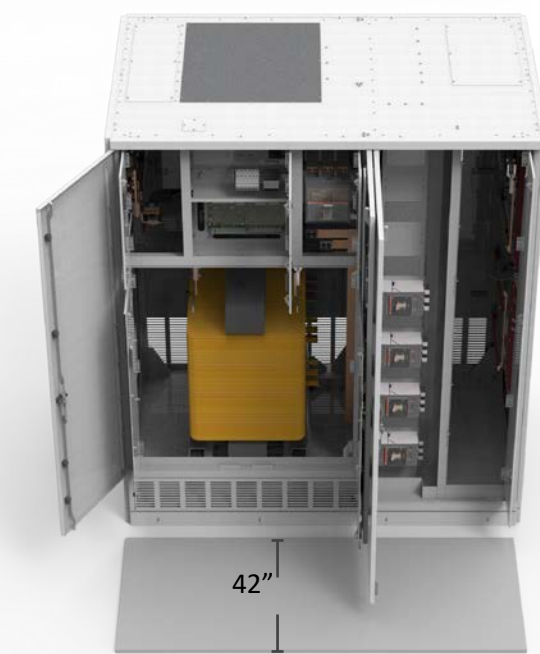


# Power Distribution Unit (ePODs)- Type-X SF 750 kVA

Input Voltage	480 V; 575 V; 600 V
Output Voltage	120/208 V; 240/415 V
Transformer Size	750 kVA
Dimensions	48" W x 90" H x 36" D (1219 mm H x 2235 mm H x 914 mm D)
Weight	2,450 lbs (1111 kg) - 3,900 lbs (1769 kg)
Heat Dissipation	Varies on Transformer Efficiency
Cable Entry Type	NEMA 2-Hole (1/2" dia), 1-3/4" Spacing Compression Type Lug
Cable Size	(2) 250MCM
Connectivity	Ethernet
Clearances:	
Front	42" [1067mm]
Rear	4" [102mm]
Left	0
Right	0
Top	18" [457mm]



zen DPQM	Convection Cooling
SafePanel™ Distribution	Black Box Forensic Diagnostics
Bluetooth Connectivity	Silver Plated Terminals
InSight™ IR Portholes	Ethernet Connectivity
Touch Screen GUI	Modbus/TCP
Waveform Capture	Network Time Protocol
SNMP	NELP

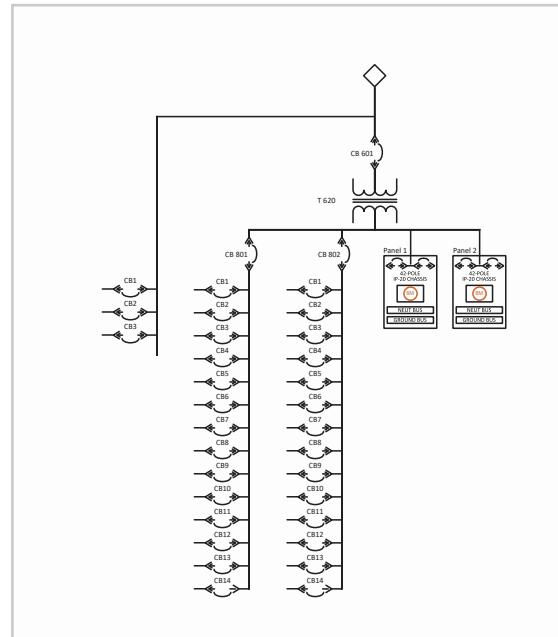
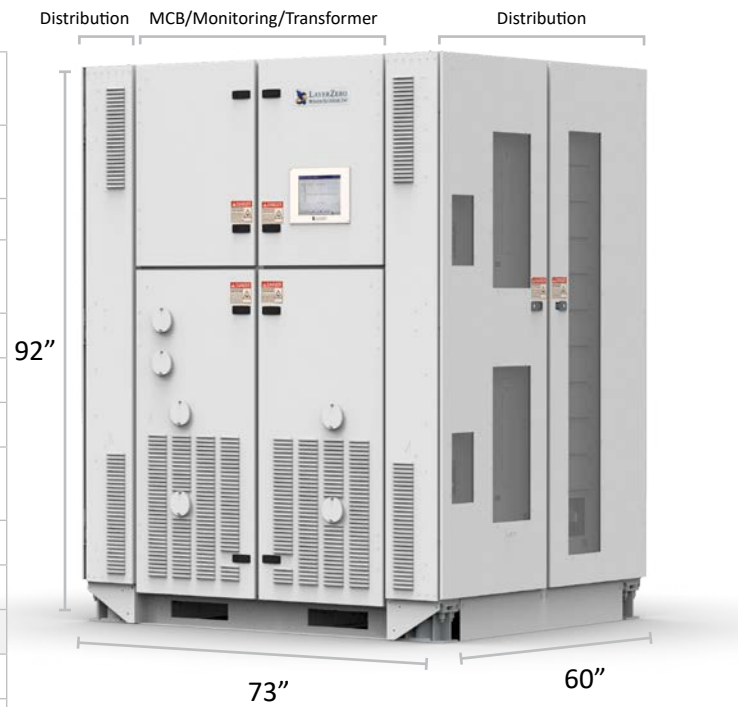


zen DPQM	Convection Cooling
SafePanel™ Distribution	Black Box Forensic Diagnostics
Bluetooth Connectivity	Silver Plated Terminals
InSight™ IR Portholes	Ethernet Connectivity
Touch Screen GUI	Modbus/TCP
Waveform Capture	Network Time Protocol
SNMP	NELP

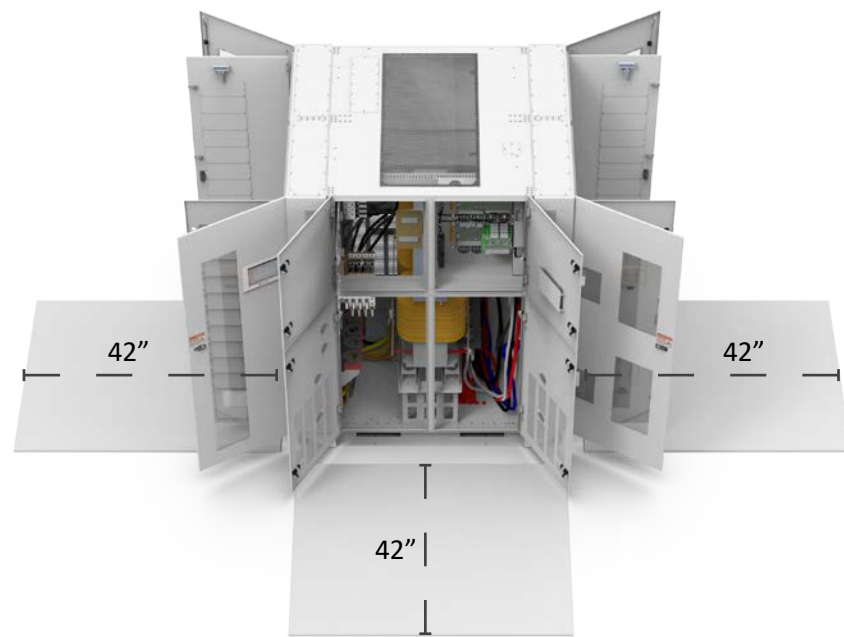


# PDU w/ Primary & Secondary Distribution - Type-maX Industrial

Input Voltage	480 V
Output Voltages	120/208 V
Transformer Size	300 kVA, 400 kVA, 500 kVA
Dimensions	92" H x 73" W x 60" D (2337 mm H x 1854 mm W x 1524mm D)
Weight	Please Contact LayerZero Engineering
Heat Dissipation	Varies on Transformer Efficiency
Weight	6120 lbs [2776 kg]
Cable Entry Type	NEMA 2-Hole (1/2" dia), 1-3/4" Spacing Compression Type Lug
Cable size	(4) 500MCM MAX
Connectivity	Ethernet
Clearances:	
Front	42" [1067mm]
Rear	4" [102mm]
Left	42" [1067mm]
Right	42" [1067mm]
Top	18" [457mm]

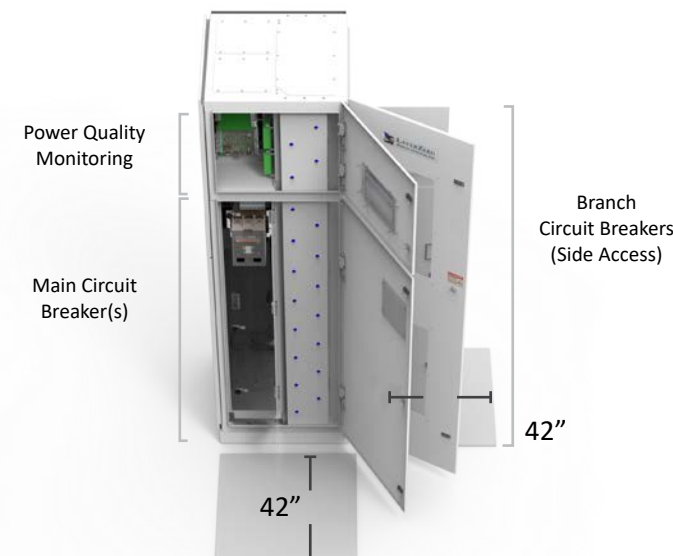
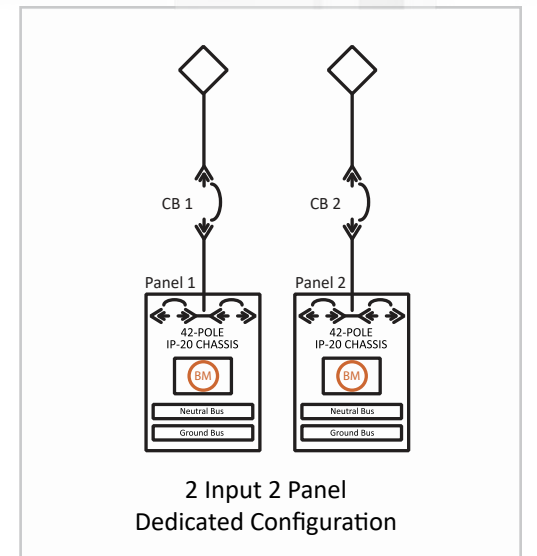


zen DPQM	Convection Cooling
SafePanel™ Distribution	Black Box Forensic Diagnostics
Bluetooth Connectivity	Silver Plated Terminals
InSight™ IR Portholes	Ethernet Connectivity
Touch Screen GUI	Modbus/TCP
Waveform Capture	Network Time Protocol
SNMP	NELP



# Remote Power Panel (eRPP)- eRPP-FS

Input Voltage	120/208 V, 3-phase, 4-wire + Ground; 208V, 3-phase, 3-wire + Ground; 220/280 V, 3-phase, 4-wire + Ground; 230/400 V, 3-phase, 4-wire + Ground; 240/415 V, 3-phase, 4-wire + Ground; 277/480 V, 3-phase, 4-wire; 480V, 3-phase, 3-wire + Ground
Number of Output CBs	42-Circuit
Number of Poles	3-Pole; 4-Pole
Dimensions	24"W x 96"H x 24"D (610 mm x 2438 mm x 610 mm)
Weight	250 lbs (114 kg)
Configurations	
1 Input, 2 Panels	Parallel (P), Dedicated (D)
2 Inputs, 2 Panels	Main-Tie-Main (MTM), Feed Through (FT)
1 Input, 4 Panels	Parallel (P)
4 Inputs, 4 Panels	Dedicated (D), Feed Through (FT), Main-Tie-Main (MTM)
Cable Entry Type	NEMA 2-Hole (1/2" dia), 1-3/4" Spacing Compression Type Lug
Cable Size	(2) 1/0 to 500MCM
Connectivity	Ethernet
Clearances:	
Front	36" [915mm]
Rear	0
Left	36" [915mm]
Right	36" [915mm]
Top	18" [457mm]

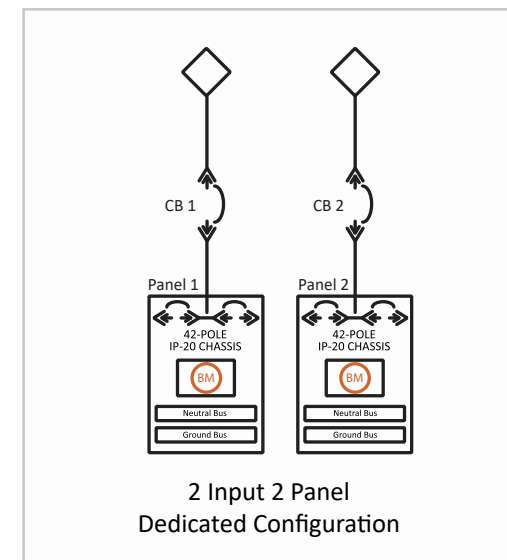


zen DPQM	Convection Cooling
SafePanel™ Distribution	Black Box Forensic Diagnostics
Bluetooth Connectivity	Silver Plated Terminals
InSight™ IR Portholes	Ethernet Connectivity
Touch Screen GUI	Modbus/TCP
Waveform Capture	Network Time Protocol
SNMP	NELP

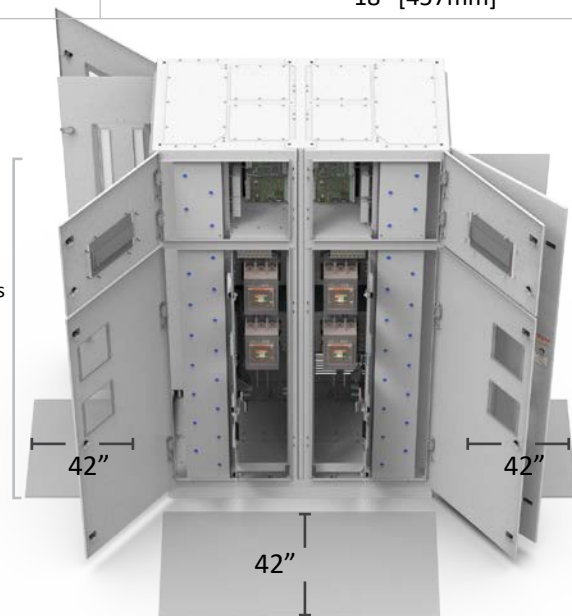


# Remote Power Panel (eRPP)- eRPP-FSR

Input Voltage	120/208 V, 3-phase, 4-wire + Ground; 208V, 3-phase, 3-wire + Ground; 220/280 V, 3-phase, 4-wire + Ground; 230/400 V, 3-phase, 4-wire + Ground; 240/415 V, 3-phase, 4-wire + Ground; 277/480 V, 3-phase, 4-wire; 480V, 3-phase, 3-wire + Ground
Number of Output CBs	84-Circuit
Number of Poles	3-Pole; 4-Pole
Dimensions	48"W x 96"H x 24"D (1220 mm x 2438 mm x 610 mm)
Weight	500 lbs (227 kg)
Configurations	
1 Input, 2 Panels	Parallel (P), Dedicated (D)
2 Inputs, 2 Panels	Main-Tie-Main (MTM), Feed Through (FT)
1 Input, 4 Panels	Parallel (P)
4 Inputs, 4 Panels	Dedicated (D), Feed Through (FT), Main-Tie-Main (MTM)
Cable Entry Type	NEMA 2-Hole (1/2" dia), 1-3/4" Spacing Compression Type Lug
Cable Size	(2) 1/0 to 500MCM
Connectivity	Ethernet
Clearances:	
Front	36" [915mm]
Rear	0
Left	36" [915mm]
Right	36" [915mm]
Top	18" [457mm]



zen DPQM	Convection Cooling
SafePanel™ Distribution	Black Box Forensic Diagnostics
Bluetooth Connectivity	Silver Plated Terminals
InSight™ IR Portholes	Ethernet Connectivity
Touch Screen GUI	Modbus/TCP
Waveform Capture	Network Time Protocol
SNMP	NELP

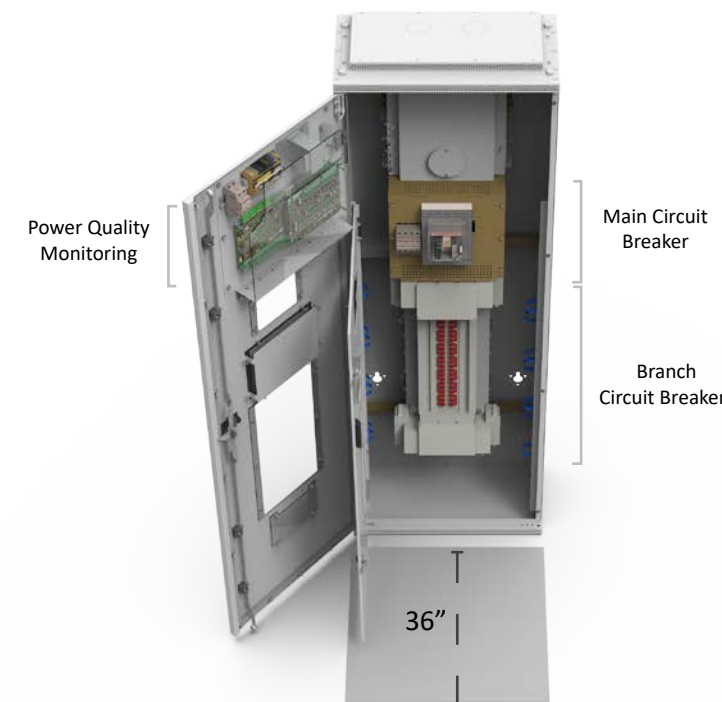


Power Quality Monitoring

Main Circuit Breaker(s)

# Remote Power Panel (eRPP)- eRPP-SL1

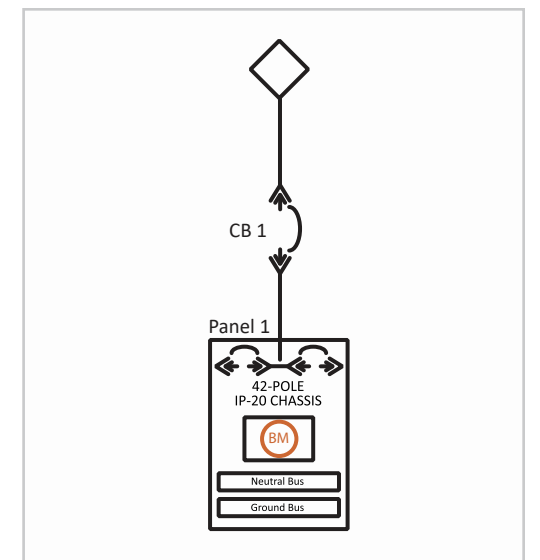
Input Voltage	120/208 V, 3-phase, 4-wire + Ground; 220/380 V, 3-Phase, 4-Wire + Ground; 230/400 V, 3-Phase, 4-Wire + Ground; 240/415 V, 3-Phase, 4-Wire + Ground; 277/480 V, 3-Phase, 4-Wire + Ground; 480 V, 3-Phase, 3-Wire + Ground
Number of Output CBs	42-Circuit
Number of Poles	3-Pole; 4-Pole
Dimensions	23.25"W x 71"H x 12"D (590.55 mm x 1803.4 mm x 304.8 mm)
Weight	340 lbs (154 kg)
Cable Entry Type	NEMA 2-Hole (1/2" dia), 1-3/4" Spacing Compression Type Lug
Cable Size	(2) 3/0
Connectivity	Ethernet
Clearances:	
Front	36" [915mm]
Rear	0
Left	0
Right	0
Top	18" [457mm]



Power Quality Monitoring

Main Circuit Breaker

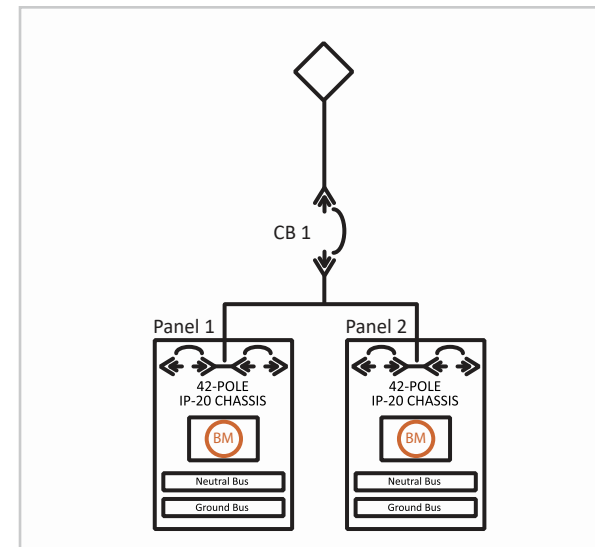
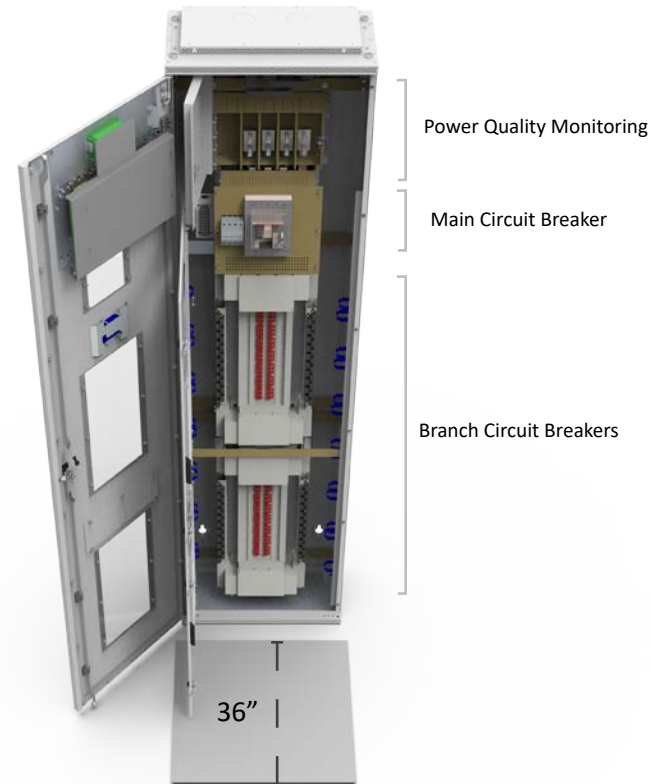
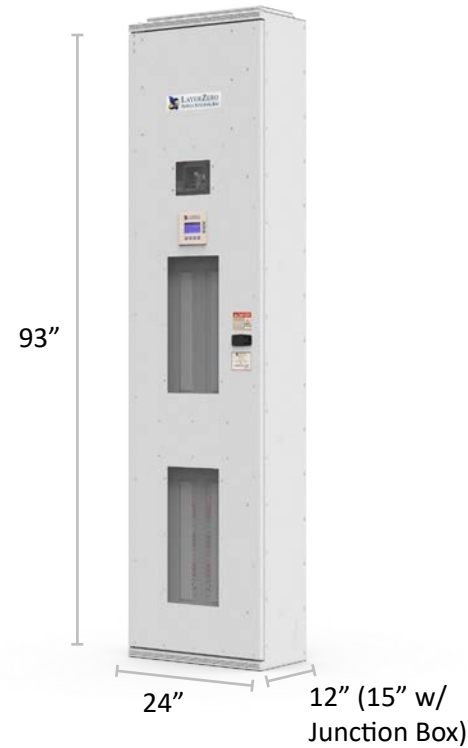
Branch Circuit Breakers



zen DPQM	Convection Cooling
SafePanel™ Distribution	Black Box Forensic Diagnostics
Bluetooth Connectivity	Silver Plated Terminals
InSight™ IR Portholes	Ethernet Connectivity
Touch Screen GUI	Modbus/TCP
Waveform Capture	Network Time Protocol
SNMP	NELP

# Remote Power Panel (eRPP)- eRPP-SL2

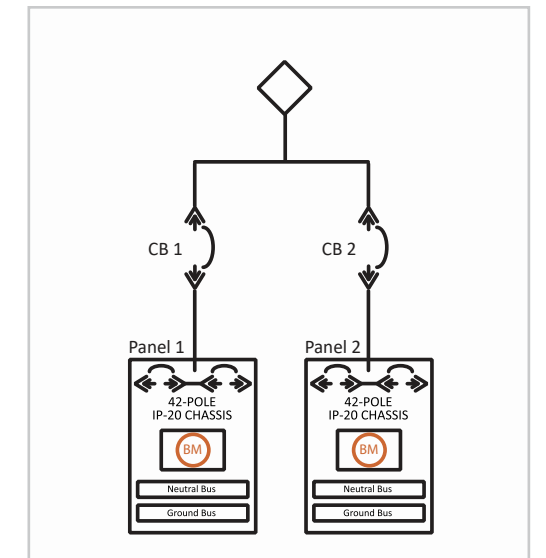
Input Voltage	120/208 V, 3-phase, 4-wire + Ground; 220/380 V, 3-Phase, 4-Wire + Ground; 230/400 V, 3-Phase, 4-Wire + Ground; 240/415 V, 3-Phase, 4-Wire + Ground; 277/480 V, 3-Phase, 4-Wire + Ground; 480 V, 3-Phase, 3-Wire + Ground
Number of Output CBs	84-Circuit
Number of Poles	3-Pole; 4-Pole
Dimensions	24"W x 93"H x 12"D (610 mm x 2362 mm x 305 mm)
Weight	550 lbs (250 kg)
Cable Entry Type	NEMA 2-Hole (1/2" dia), 1-3/4" Spacing Compression Type Lug
Cable Size	(2) 3/0
Connectivity	Ethernet
Clearances:	
Front	36" [915mm]
Rear	0
Left	1" [25mm]
Right	1" [25mm]
Top	18" [457mm]



zen DPQM	Convection Cooling
SafePanel™ Distribution	Black Box Forensic Diagnostics
Bluetooth Connectivity	Silver Plated Terminals
InSight™ IR Portholes	Ethernet Connectivity
Touch Screen GUI	Modbus/TCP
Waveform Capture	Network Time Protocol
SNMP	NELP

# Power Panel - ePanel-2

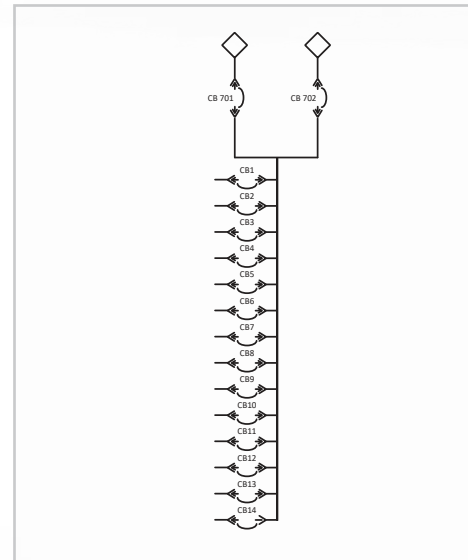
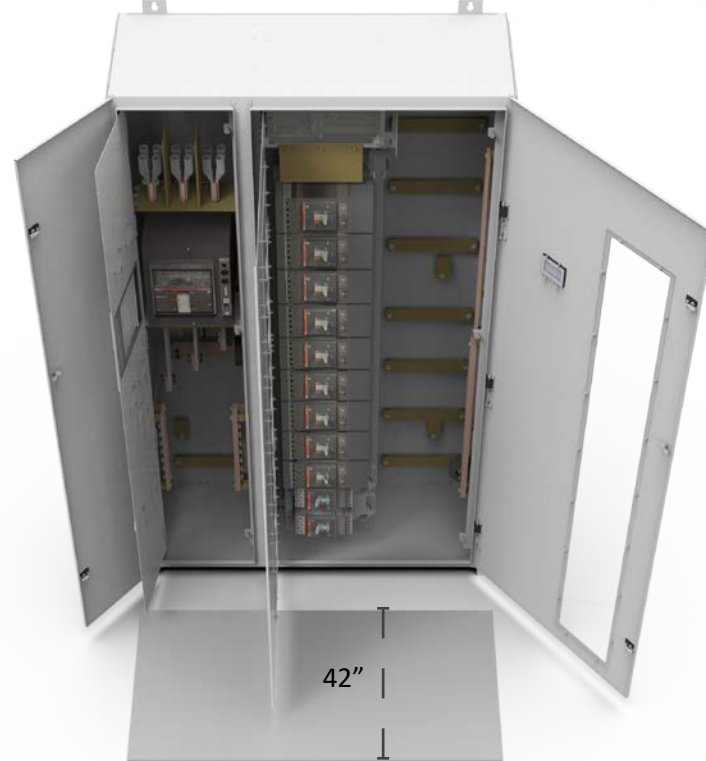
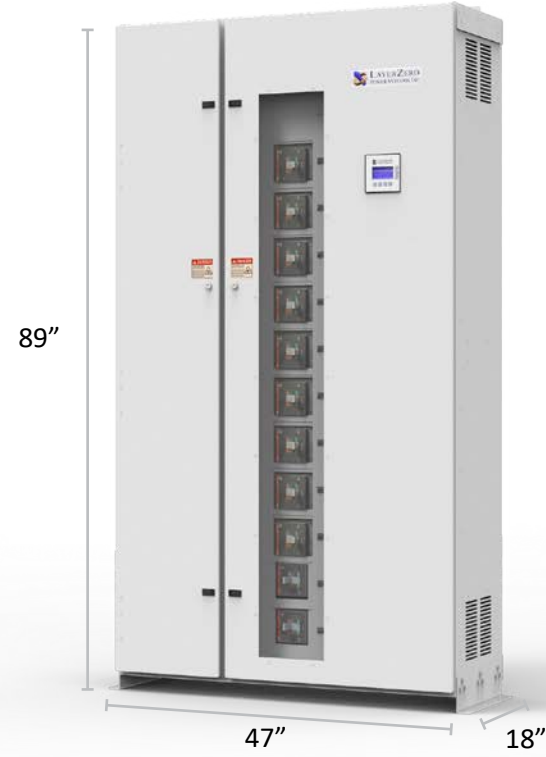
Input Voltage	120/208 V, 3-Phase, 4-Wire + Ground; 220/380 V, 3-Phase, 4-Wire + Ground; 230/400 V, 3-Phase, 4-Wire + Ground; 240/415 V, 3-Phase, 4-Wire + Ground; 277/480 V, 3-Phase, 4-Wire + Ground; 480 V, 3-Phase, 3-Wire + Ground
Number of Output CBs	84-Circuit
Number of Poles	3-Pole; 4-Pole
Dimensions	47"W x 80"H x 10.5"D (1193 mm W x 2032 mm H x 266.7 mm)
Weight	550 lbs (250 kg)
Configurations	
1 Input, 2 Panels	Parallel (P), Shared Parallel (SP)
2 Inputs, 2 Panels	Dedicated (D), Feed Through (FT)
Cable Entry Type	NEMA 2-Hole (1/2" dia), 1-3/4" Spacing Compression Type Lug
Cable Size	350MCM/(2) 4/0 - 500MCM / (2) 250MCM
Connectivity	Ethernet
Clearances:	
Front	36" [915mm]
Rear	0
Left	1" [25mm]
Right	1" [25mm]
Top	18" [457mm]



zen DPQM	Convection Cooling
SafePanel™ Distribution	Black Box Forensic Diagnostics
Bluetooth Connectivity	Silver Plated Terminals
InSight™ IR Portholes	Ethernet Connectivity
Touch Screen GUI	Modbus/TCP
Waveform Capture	Network Time Protocol
SNMP	NELP

# Distribution Panel - eRDP

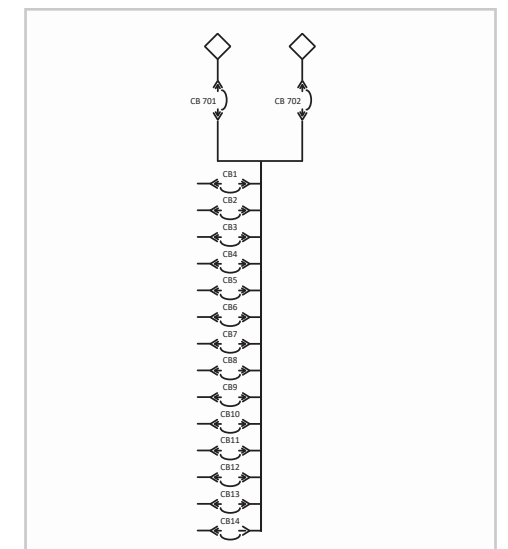
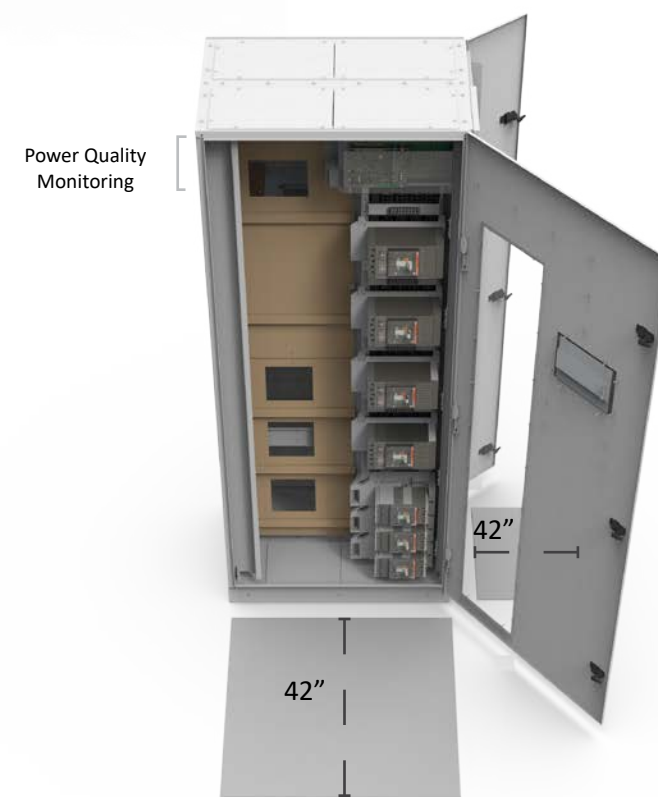
Input Voltage	120/208V, 3-Phase, 4-Wire + Ground; 220/380V, 3-Phase, 4-Wire + Ground; 230/400V, 3-Phase, 4-Wire + Ground; 240/415V, 3-Phase, 4-Wire + Ground; 277/480V, 3-Phase, 4-Wire + Ground; 480V, 3-Phase, 3-Wire + Ground; 575V, 3-Phase, 3-Wire + Ground; 600V, 3-Phase, 3-Wire + Ground
Number of Poles	3-Pole; 4-Pole
Dimensions	47"W x 89"H x 18"D (1194 mm x 2260 mm x 457 mm)
Weight	912 lbs (414 kg)
Cable Entry Type	NEMA 2-Hole (1/2" dia), 1-3/4" Spacing Compression Type Lug
Cable Size	(2) 350 MCM - (3) 350 MCM
Connectivity	Ethernet
Clearances:	
Front	42" [1067mm]
Rear	0
Left	0.25" [6mm]
Right	0.25" [6mm]
Top	18" [457mm]



zen DPQM	Convection Cooling
SafePanel™ Distribution	Black Box Forensic Diagnostics
Bluetooth Connectivity	Silver Plated Terminals
InSight™ IR Portholes	Ethernet Connectivity
Touch Screen GUI	Modbus/TCP
Waveform Capture	Network Time Protocol
SNMP	NELP

# Distribution Panel - eRDP-FS

Input Voltage	120/208V, 3-Phase, 4-Wire + Ground; 220/380V, 3-Phase, 4-Wire + Ground; 230/400V, 3-Phase, 4-Wire + Ground; 240/415V, 3-Phase, 4-Wire + Ground; 277/480V, 3-Phase, 4-Wire + Ground; 480V, 3-Phase, 3-Wire + Ground; 575V, 3-Phase, 3-Wire + Ground; 600V, 3-Phase, 3-Wire + Ground
Number of Poles	3-Pole; 4-Pole
Dimensions	36"W x 88"H x 24"D (610 mm x 2235 mm x 914 mm)
Weight	510 lbs (231 kg)
Cable Entry Type	NEMA 2-Hole (1/2" dia), 1-3/4" Spacing Compression Type Lug
Cable Size	(2) 500MCM
Connectivity	Ethernet
Clearances:	
Front	36" [915mm]
Rear	0
Left	1" [25mm]
Right	1" [25mm]
Top	18" [457mm]

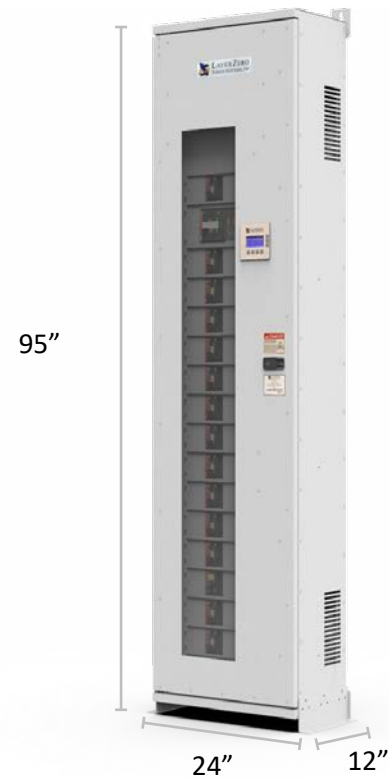


zen DPQM	Convection Cooling
SafePanel™ Distribution	Black Box Forensic Diagnostics
Bluetooth Connectivity	Silver Plated Terminals
InSight™ IR Portholes	Ethernet Connectivity
Touch Screen GUI	Modbus/TCP
Waveform Capture	Network Time Protocol
SNMP	NELP



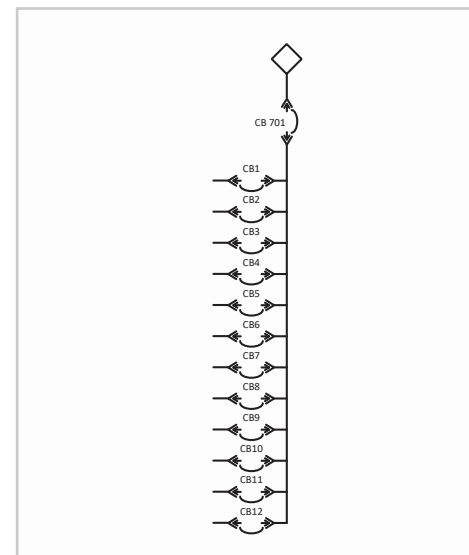
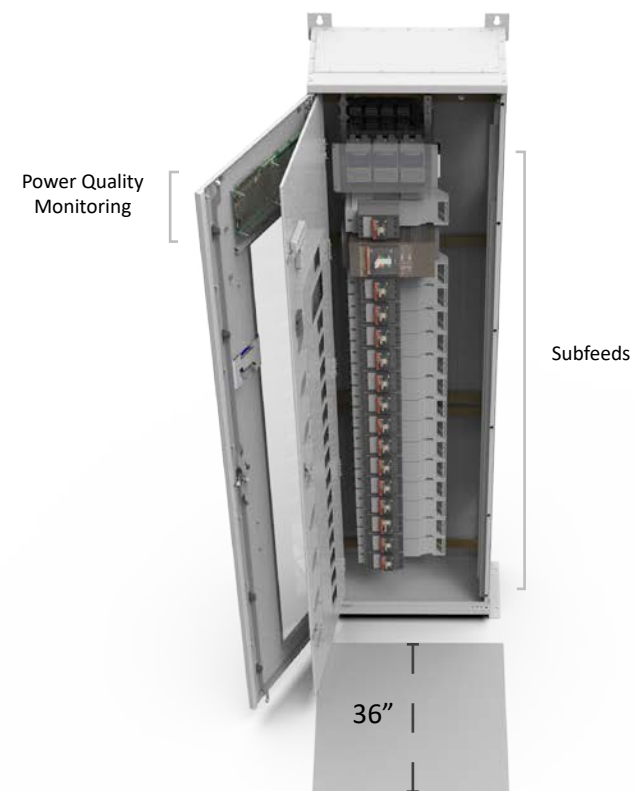
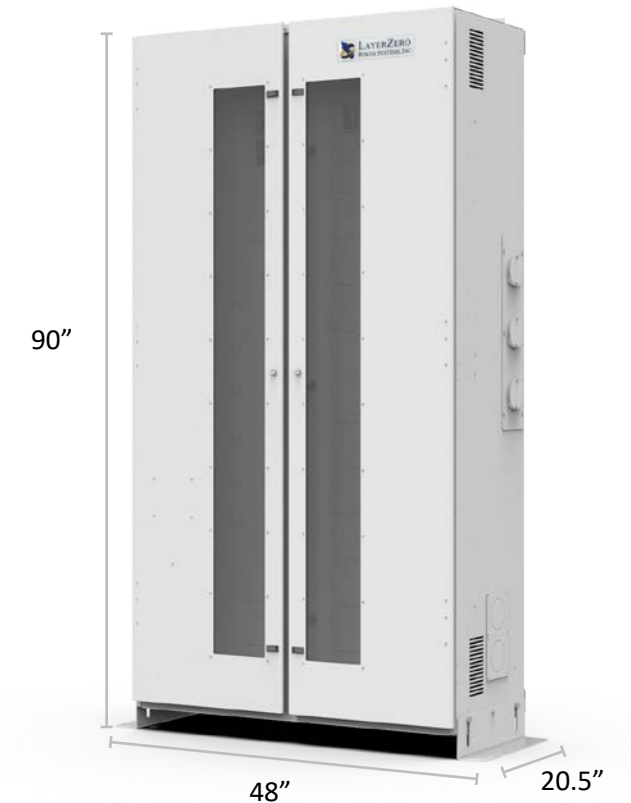
# High Density Power Panel - ePanel-HD1

Input Voltage	120/208 V, 3-Phase, 4-Wire + Ground; 220/380 V, 3-Phase, 4-Wire + Ground; 230/400 V, 3-Phase, 4-Wire + Ground; 240/415 V, 3-Phase, 4-Wire + Ground; 277/480 V, 3-Phase, 4-Wire + Ground; 480 V, 3-Phase, 3-Wire + Ground
Number of Poles	3-Pole
Dimensions	24"W x 95"H x 12"D (609.6 mm W x 2286mm H x 304.8 mm D)
Weight	450 lbs (204 kg)
Cable Entry Type	NEMA 2-Hole (1/2" dia), 1-3/4" Spacing Compression Type Lug
Cable Size	2/0AWG to 250-400MCM
Connectivity	Ethernet
Clearances:	
Front	36" [915mm]
Rear	0
Left	0
Right	0
Top	18" [457mm]

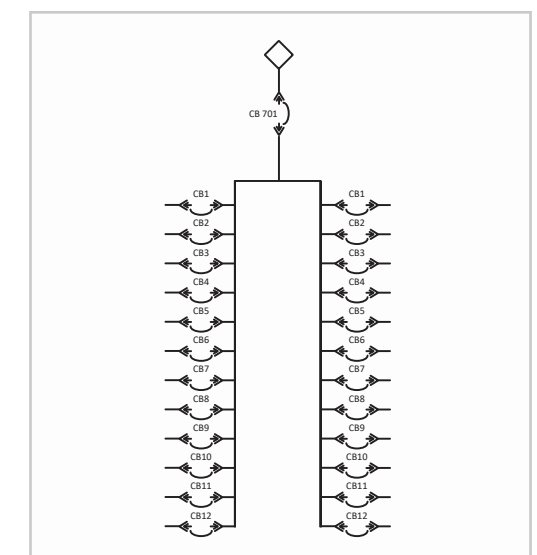
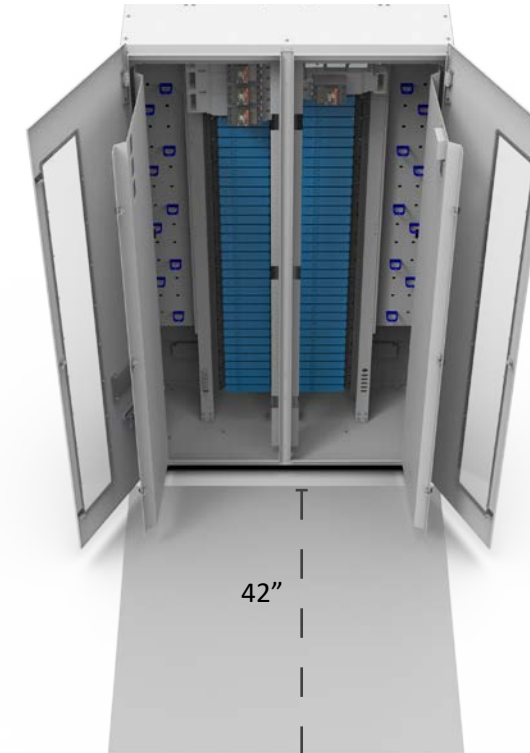


# High Density Power Panel - ePanel-HD2

Input Voltage	120/208 V, 3-Phase, 4-Wire + Ground; 220/380 V, 3-Phase, 4-Wire + Ground; 230/400 V, 3-Phase, 4-Wire + Ground; 240/415 V, 3-Phase, 4-Wire + Ground; 277/480 V, 3-Phase, 4-Wire + Ground; 480 V, 3-Phase, 3-Wire + Ground
Number of Poles	3-Pole
Dimensions	48"W x 90"H x 20.5"D (1219.2 mm W x 2286 mm H x 520.7 mm D)
Weight	510 lbs (231 kg)
Cable Entry Type	NEMA 2-Hole (1/2" dia), 1-3/4" Spacing Compression Type Lug
Cable Size	(3) 350MCM per phase
Connectivity	Ethernet
Clearances:	
Front	36" [915mm]
Rear	0
Left	18" [457mm]
Right	18" [457mm]
Top	0



zen DPQM	Convection Cooling
SafePanel™ Distribution	Black Box Forensic Diagnostics
Bluetooth Connectivity	Silver Plated Terminals
InSight™ IR Portholes	Ethernet Connectivity
Touch Screen GUI	Modbus/TCP
Waveform Capture	Network Time Protocol
SNMP	NELP

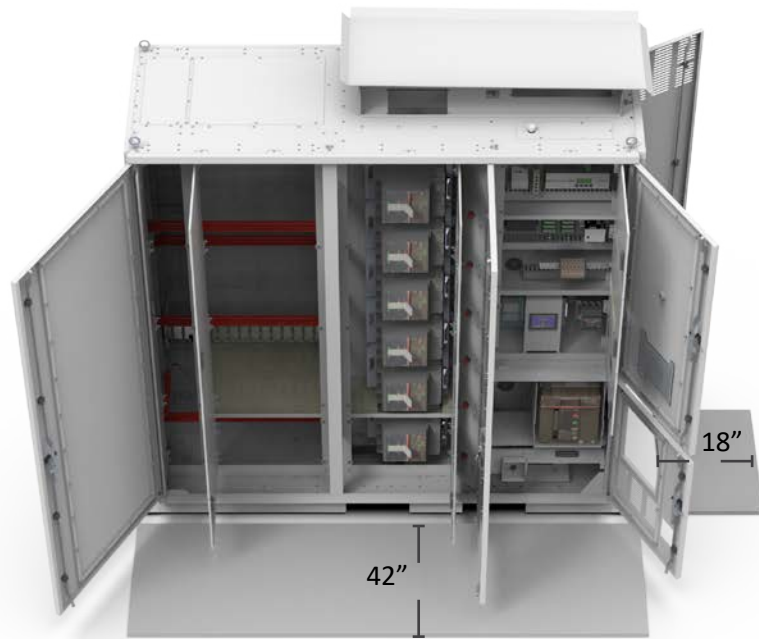
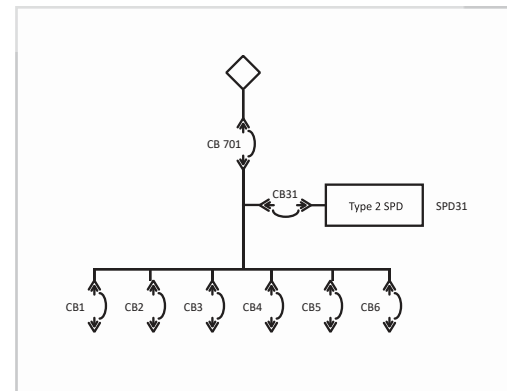


zen DPQM	Convection Cooling
SafePanel™ Distribution	Black Box Forensic Diagnostics
Bluetooth Connectivity	Silver Plated Terminals
InSight™ IR Portholes	Ethernet Connectivity
Touch Screen GUI	Modbus/TCP
Waveform Capture	Network Time Protocol
SNMP	NELP



# SafeArm Power Panel - SafeArm™

Input Voltage	220/380V, 3-Phase, 4-Wire + Ground 230/400V, 3-Phase, 4-Wire + Ground 240/415V, 3-Phase, 4-Wire + Ground 277/480V, 3-Phase, 4-Wire + Ground 208V, 3-phase, 3-wire + Ground 480V, 3-Phase, 3-Wire + Ground 575V, 3-Phase, 3-Wire + Ground 600V, 3-Phase, 3-Wire + Ground
Dimensions	87"W x 90.2"H x 29.7"D (2210 mm W x 2291 mm H x 754 mm D)
Weight	2500 lbs (1334 kg)
Cable Entry Type	NEMA 2-Hole (1/2" dia), 1-3/4" Spacing Compression Type Lug
Cable Size	Up to 500 MCM
Connectivity	Ethernet
Clearances:	
Front	42" [1067mm]
Rear	0
Left	6" [152mm]
Right	42" [1067mm]
Top	18" [457mm]



zen DPGM	Convection Cooling
SafePanel™ Distribution	Black Box Forensic Diagnostics
Bluetooth Connectivity	Silver Plated Terminals
InSight™ IR Portholes	Ethernet Connectivity
Touch Screen GUI	Modbus/TCP
Waveform Capture	Network Time Protocol
SNMP	NELP

# LayerZero Power Systems- Quality in Manufacturing

Founded in 2001, LayerZero Power Systems, Inc. was built on the belief of designing power quality products that were highly reliable, safe to operate, well connected, with advanced power quality monitoring capabilities. From humble beginnings, our company has assembled a team of the most talented engineers; established excellent connected processes; and developed state-of-the-art power conditioning solutions designated specifically for the most discerning customers.

LayerZero expanded capabilities by establishing a modern, automated manufacturing facility located in 2012. If you are looking for the safest and most reliable power quality products available today - they're right here.

As a LayerZero customer you will come to expect an extraordinarily high level of product reliability; information centrality and connectivity that will allow you to provide equally high service levels to your customers by keeping the mission critical process running at all times. Maximization of uptime is our highest priority, and every detail of LayerZero products were designed with this core-mission in mind.

We utilize a model-to-manufacturing design process that has allowed our product configurations to be highly configurable, exceptionally reliable, and quick-to-market. Our products are manufactured utilizing advanced processes that are efficient, cost-effective, and precise. The uncompromising quality and meritorious attention-to-detail of all of our products stands as the pinnacle of the power quality industry.

All LayerZero products are designed, built, and tested at the LayerZero Power Systems world headquarters and manufacturing facility in Aurora, Ohio, USA.

Please contact your LayerZero sales representative to schedule a factory tour of the LayerZero manufacturing facility.



LayerZero Power Systems Manufacturing Facility

Product Type	Product	Poles	Input Voltage	Height	Width	Depth	Weight	Cooling Type	Heat Dissipation	Cable Entry Type	Cable Size	Clearance Front	Clearance Rear	Clearance Left	Clearance Right	Clearance Top
Static Transfer Switch	eSTS - 400-600 A	3	120/208 V; 480 V; 480/277 V; 415/240 V; 400/230 V; 220/380 V; 600 V; 600/347 V; 575 V	80	36	36	1,350 lbs	Convection	4,750 BTU/Hr	NEMA 2-Hole (1/2" dia), 1-3/4" Spacing Compression Type Lug	Up To 250KCMIL - 350KCMIL	36"	0"	0"	0"	18"
	eSTS - 800 A	3	120/208 V; 480 V; 480/277 V; 415/240 V; 400/230 V; 220/380 V; 600 V; 600/347 V; 575 V	80	48	36	1,400-1,500 lbs	Convection	7,000-9,500 BTU/Hr	NEMA 2-Hole (1/2" dia), 1-3/4" Spacing Compression Type Lug	(2) 250KCMIL - (2) 350KCMIL	36"	0"	0"	0"	18"
	(eSTS) - 1200 A	3	120/208 V; 480 V; 480/277 V; 415/240 V; 400/230 V; 220/380 V; 600 V; 600/347 V; 575 V	90	96	48	5,500 lbs	Convection	24,000 BTU/Hr	NEMA 2-Hole (1/2" dia), 1-3/4" Spacing Compression Type Lug	(4) 350 MCM	42"	4"	0"	0"	18"
	(eSTS) - 1000-1200 A	3	120/208 V; 480 V; 480/277 V; 415/240 V; 400/230 V; 220/380 V; 600 V; 600/347 V; 575 V	88	59	45	3,000	Forced Air	13,452-16,352 BTU/Hr	NEMA 2-Hole (1/2" dia), 1-3/4" Spacing Compression Type Lug	(4) 350 MCM	42"	0"	0"	0"	18"
	(eSTS) - 1600-4000 A	3	120/208 V; 480 V; 480/277 V; 415/240 V; 400/230 V; 220/380 V; 600 V; 600/347 V; 575 V	85"-91"	152"-192"	57"	7,600-11,000 lbs	Forced Air	24,200-62,700 BTU/Hr	NEMA 2-Hole (1/2" dia), 1-3/4" Spacing Compression Type Lug	(12MAX) 600 KCMIL - (12) 750 KCMIL	42"	42"	0"-4"	0"-4"	18"
	(eSTS) - 250-1200 A	4	120/208 V; 220/380 V; 230/400 V; 240/415 V; 277/480 V	90"	48"	36"	1,800-7,600 lbs	Convection	4,400 - 17,500 BTU/Hr	NEMA 2-Hole (1/2" dia), 1-3/4" Spacing Compression Type Lug	350KCMIL minimum (250A)	36-42"	0-4"	0"	0-42"	18"
	(eSTS) - 1600-2000 A	4	120/208 V; 220/380 V; 230/400 V; 240/415 V; 277/480 V	90"	48"	36"	1,800-7,600 lbs	Convection?	24,500 - 33,200 BTU/Hr	NEMA 2-Hole (1/2" dia), 1-3/4" Spacing Compression Type Lug	350KCMIL minimum (250A)	36-42"	0-4"	0"	0-42"	18"
STS + PDU	(ePODs) - Type-P	3	208 V @ 240 V; 480 V; 575 V; 600 V	88"	96"	36"	2000 - 3000 lbs	Convection	Varies	NEMA 2-Hole (1/2" dia), 1-3/4" Spacing Compression Type Lug	Varies on size; 75 kVA, 125 kVA, 150 kVA, 225 kVA, 250 kVA, 300 kVA, 400 kVA, 500 kVA, 600 kVA, 750 kVA, 800 kVA, 1000 kVA	42"	4"	0"	42"	18"
	(ePODs) - Dual Type-P	3	120/208 V; 480 V; 480/277 V; 415/240 V; 400/230 V; 220/380 V; 600 V; 600/347 V; 575 V	90"	96"	48"	5,500 lbs	Convection	24,000 BTU/Hr	NEMA 2-Hole (1/2" dia), 1-3/4" Spacing Compression Type Lug	(2) 350MCM	42"	4"	42"	42"	18"
	(ePODs) - Type-S	3	480 V; 575 V, 600 V	86"	142"	36"	2,150 - 3,500 lbs	Convection	Varies	NEMA 2-Hole (1/2" dia), 1-3/4" Spacing Compression Type Lug	(2) 350MCM	42"	4"	0"	36"	18"
	(ePODs) - Type-N	3	208 V @ 240 V; 480 V; 575 V; 600 V	86"	60"	36"	1,900-6,050 lbs	Convection	4,750-24,000 BTU/Hr	NEMA 2-Hole (1/2" dia), 1-3/4" Spacing Compression Type Lug	(2) 250MCM	42"	4"	0"	42"	18"
PDU	(ePODs) - Type-X	3	480 V; 575 V; 600 V	90"	36"	48"	2,450-3,900 lbs	Convection	Varies	NEMA 2-Hole (1/2" dia), 1-3/4" Spacing Compression Type Lug	(2) 4/0	42"	4"	42"	42"	18"
	(ePODs) - Type-X SF	3	480 V; 575 V; 600 V	90"	48"	36"	2,450-3,900 lbs	Convection	Varies	NEMA 2-Hole (1/2" dia), 1-3/4" Spacing Compression Type Lug	(2) 250MCM	42"	4"	0"	42"	18"
	(ePODs) - Type-X SF 750 kVA	3	480 V; 575 V; 600 V	90"	48"	36"	2,450-3,900 lbs	Convection	Varies	NEMA 2-Hole (1/2" dia), 1-3/4" Spacing Compression Type Lug	(2) 250MCM	42"	4"	0"	42"	18"
	ePods - Type-maX Industrial	3	480 V	92"	73"	60"	Contact LayerZero	Convection	Varies	NEMA 2-Hole (1/2" dia), 1-3/4" Spacing Compression Type Lug	(4) 500MCM MAX	42"	4"	42"	42"	18"
RPP	(eRPP) - eRPP-FS	3	120/208 V; 208V; 220/280 V; 230/400 V; 240/415 V; 277/480 V; 480V	96"	24"	24"	250 lbs	Convection	N/A	NEMA 2-Hole (1/2" dia), 1-3/4" Spacing Compression Type Lug	(2) 1/0 to 500MCM	36"	0"	36"	36"	18"
	(eRPP) - eRPP-FSR	3	120/208 V; 208V; 220/280 V; 230/400 V; 240/415 V; 277/480 V; 480V	96"	48"	24"	500 lbs	Convection	N/A	NEMA 2-Hole (1/2" dia), 1-3/4" Spacing Compression Type Lug	(2) 1/0 to 500MCM	36"	0"	36"	36"	18"
	(eRPP) - eRPP-SL1	3	120/208 V; 220/380 V; 230/400 V; 240/415 V; 277/480 V; 480 V	71"	23.25"	12"	340 lbs	Convection	N/A	NEMA 2-Hole (1/2" dia), 1-3/4" Spacing Compression Type Lug	(2) 3/0	36"	0"	0"	0"	18"
	(eRPP) - eRPP-SL2	3	120/208 V; 220/380 V; 230/400 V; 240/415 V; 277/480 V; 480 V	93"	24"	12"	550 lbs	Convection	N/A	NEMA 2-Hole (1/2" dia), 1-3/4" Spacing Compression Type Lug	(2) 3/0	36"	0"	1"	1"	18"
	ePanel-2	3	120/208 V; 220/380 V; 230/400 V; 240/415 V; 277/480 V; 480 V	80"	47"	10.5"	550 lbs	Convection	N/A	NEMA 2-Hole (1/2" dia), 1-3/4" Spacing Compression Type Lug	350MCM/(2) 4/0 - 500MCM / (2) 250MCM	36"	0"	1"	1"	18"
RDP	eRDP	3	120/208V; 220/380V; 230/400V; 240/415V; 277/480V; 480V; 575V; 600V	89"	47"	18"	912 lbs	Convection	N/A	NEMA 2-Hole (1/2" dia), 1-3/4" Spacing Compression Type Lug	(2) 350 MCM - (3) 350 MCM	42"	0"	0.25"	0.25"	18"
	eRDP-FS	3	120/208V; 220/380V; 230/400V; 240/415V; 277/480V; 480V; 575V; 600V	88"	36"	24"	510 lbs	Convection	N/A	NEMA 2-Hole (1/2" dia), 1-3/4" Spacing Compression Type Lug	(2) 500MCM	36"	0"	1"	1"	18"
	ePanel-HD1	3	120/208 V; 220/380 V; 230/400 V; 240/415 V; 277/480 V; 480 V	95"	24"	12"	450 lbs	Convection	N/A	NEMA 2-Hole (1/2" dia), 1-3/4" Spacing Compression Type Lug	2/0AWG to 250-400MCM	36"	0"	0"	0"	18"
	ePanel-HD2	3	120/208 V; 220/380 V; 230/400 V; 240/415 V; 277/480 V; 480 V	90"	48"	20.5"	510 lbs	Convection	N/A	NEMA 2-Hole (1/2" dia), 1-3/4" Spacing Compression Type Lug	(3) 350MCM per phase	36"	0"	18"	18"	0"
	eRDP SafeArm™	3	220/380V; 230/400V; 240/415V; 277/480V; 208V; 480V; 575V; 600V	90.2"	87"	29.7"	2500 lbs	Convection	N/A	NEMA 2-Hole (1/2" dia), 1-3/4" Spacing Compression Type Lug	Up to 500 MCM	42"	0"	6"	42"	18"